

UPLIFTING COMPANY

AUTOP **STENHOJ**

VERTICAL
POWER

**Workshop equipment in
premium quality**

Inground lifts



Welcome to AUTOPSTENHOJ.

AUTOPSTENHOJ – Workshop equipment in premium quality

We offer solutions and not only products!

AUTOPSTENHOJ is manufacturer and supplier of workshop equipment for the global automotive market and stands for innovative processes and top-quality products. **Our goal: We want to be the market leader and for you the first choice for lifting and testing technology, workshop equipment and related services.**

Due to our decades of experience and trustful cooperation with the leading car manufacturers we are able to offer a comprehensive range of approved inground and surface-mounted lifts. Planning, advice and assembly as well as technical support round off our various range of performances.

One strong brand for all markets!

More than 100 years of experience in lifting technology

Made in Germany & Made in Denmark

We develop and produce inground lifts in Germany and surface-mounted lifts in Denmark for an intensive and long-term use in your workshop.

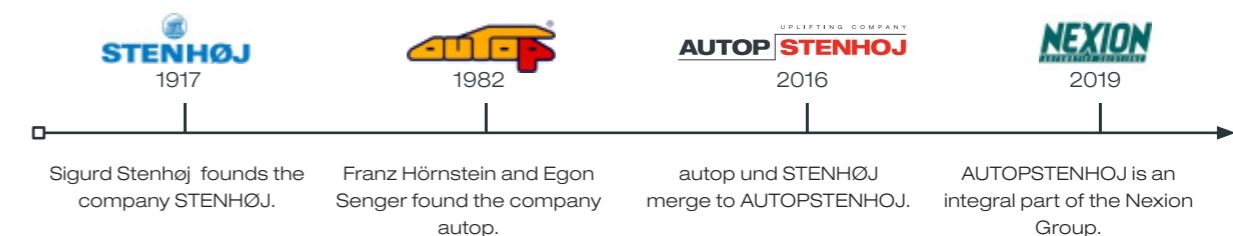
The greatest challenge with modern vehicles has been and is still to reach the correct lifting points so that the vehicle can be lifted safely and without damage at its underbody. With our extensive range of lifting adaptors we have a solution for almost every vehicle.

AUTOPSTENHOJ has been setting standards in the sector for many years. Not only our portfolio's wide range but also the quality of manufacturing and the design are unique.

AUTOPSTENHOJ's product quality is also appreciated by leading car manufacturers through approvals and recommendations.

We offer solutions and not only products!

Our premium solution is the distribution of our products through competent partners, ensuring the best possible support for our customers during the product's entire life cycle.



Our vision:

"AUTOPSTENHOJ offers the best total experience for the premium market of workshop solutions."

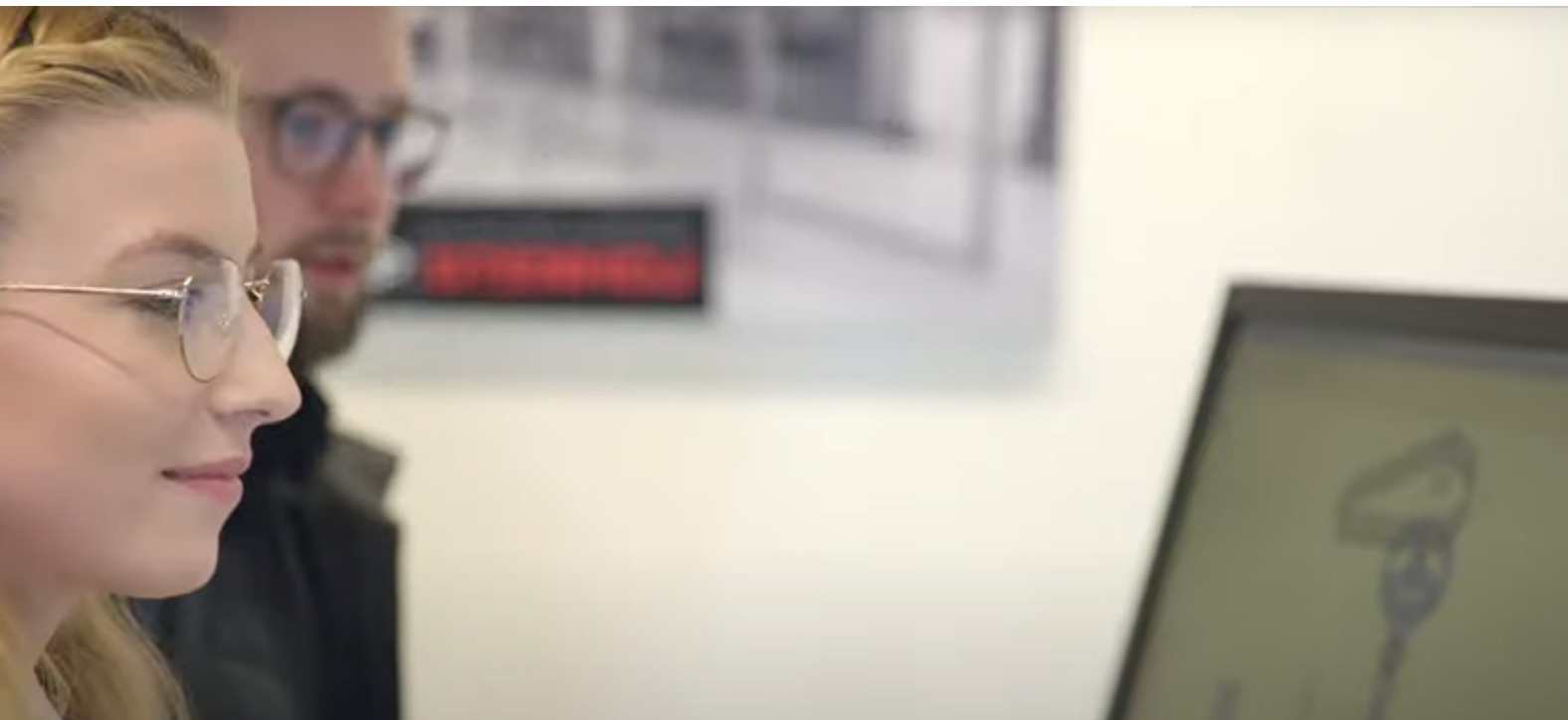




**Recommended by leading
car manufacturers.**

Workshop equipment in premium quality

For decades we have been a recommended supplier for lifts to leading car manufacturers.
Of course, we deliver our products with all the required features according to manufacturer CI.



Thanks to over 100 years of experience within the sector, today we can fall back upon a maximum degree of know-how. The best basis for the future. For example with the designers and engineers of our own R&D department who are constantly working on the lifts of the future. We offer lifts from our standard portfolio that have been tested thousands of times and can safely lift also the most modern vehicles like e-cars or hydrogen-powered cars, thanks to our wide and constantly developed range of lifting adaptors and wheel support devices.

Every new generation of technology needs a new generation of people. To secure our innovative strength, we at AUTOPSTENHOJ consistently focus on the further training of our employees and the education of young people. Thus, many trainees prepare themselves regularly for tomorrow's challenges.

**Trust in our experience and
our innovative spirit.**





Know-how with Wow-effect: Our AUTOPSTENHOJ Academy.

AUTOPSTENHOJ Academy

Practical experience and training with workshop equipment

As manufacturer of premium products, we not only want to provide our customers with premium workshop equipment, but also make sure that they get the best support before and after the purchase.

In the AUTOPSTENHOJ Academy our customers can convince themselves personally of our products' quality and suitability: **Experience AUTOPSTENHOJ!**

If necessary, we arrange lifting tests with certain vehicle types so that no questions remain open.

Additionally, our sales partners get regularly trained in our Academy, ensuring the highest competence for our customers in the field of AUTOPSTENHOJ technology: on a high training level and every time state-of-the-art.

A spacious show room and two training rooms with a total space of 440 m² are available in the AUTOPSTENHOJ Academy.

AUTOPSTENHOJ seal for sales and service partners

The leading car manufacturers and more and more car dealership chains demand certifications from their suppliers; the European Union makes these recommendations, too. Therefore we decided to implement a seal which makes us together with our partners even more recognizable on the market.

The AUTOPSTENHOJ seal certifies the value of our partners' performances in sales and technology. A regular attendance at intensive trainings in the AUTOPSTENHOJ Academy is obligatory to get this seal. The trainings impart detailed technical knowledge about our products in the field of lifting and testing technology to our partners.

With this first-hand knowledge, our partners are always up to date and the service quality remains on the highest level.





Customer service with commitment, expertise and high customer orientation.

High customer orientation:

Our products are designed for a long service life. For us, a customer relationship therefore does not end with the purchase of a lift, but goes far beyond that: we offer assembly, maintenance and repair through our own factory customer service as well as through the service departments of our certified partners throughout the entire product life cycle. Many of our lifts have been in reliable use for over 40 years; even for these models we still have spare parts in stock. We are proud of more than 75,000 underfloor lifts and several hundred thousand overhead lifts in daily operation worldwide.

A professional lift installation.

The best lift in the world is useless if it is not installed correctly. AUTOPSTENHOJ has the experience, equipment and capabilities to provide complete installation service which can also include construction work. Our highly trained service team is committed to your goals with great dedication, expertise and a high level of customer orientation.

Constant training programs for service teams.

Over the decades our partner network has grown significantly and they all have their own sales and service organizations. These good partnerships are based on our responsibilities to organize continuous sales and service training. This direct knowledge transfer keeps our partners up-to-date and delivers a high quality service to customers around the world.





Customer satisfaction is our top priority.

Many workshops have been equipped all over the world, among these the Lamborghini dealership in Kuwait. Likewise, there are now 47 of our lifts installed in the BMW subsidiary in Brussels. All lifts supplied are suitable for the whole BMW range, including the electric cars i3 & i8. So does the Mercedes Benz branch in Berlin which we equipped with more than 60 AUTOPSTENHOJ lifts and nearly 80 power modules. Or the Audi centre in Bologna... Big projects for JLR, Porsche, VW, Volvo, Mazda etc. throughout the world. We could easily continue this list.

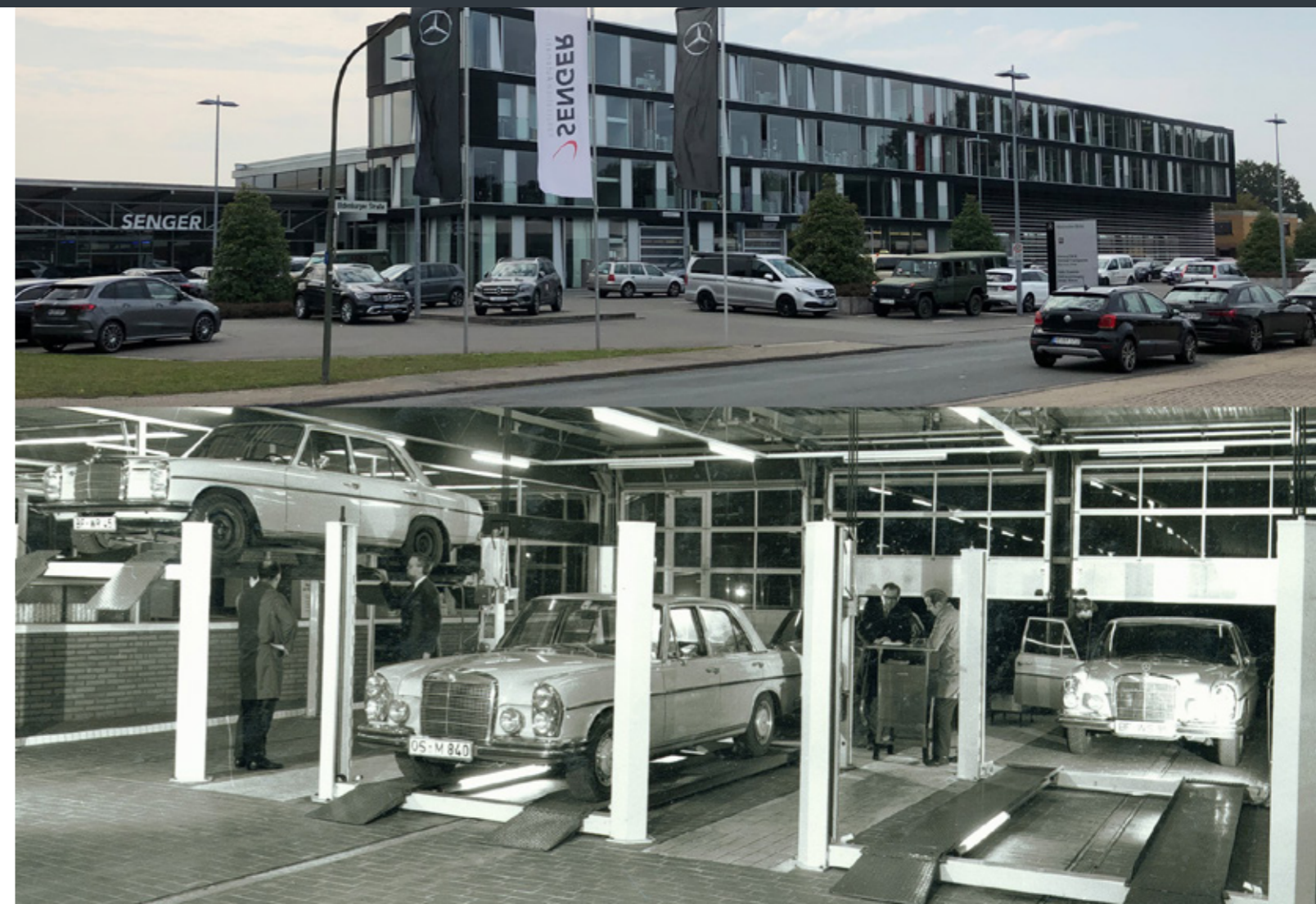
But apart from today's numerous success stories there is one unique success story which we would like to tell you. Especially because we were a part of it and have a common past.

An exceptional reference: the company group Senger

Short term successes are nice, but the best reference for us has been in the making for decades. Our company for lifting solutions was established in 1949, and in 1965 Egon Senger founded PERKUTE – his company which then later merged with autop, and which today is AUTOPSTENHOJ. This development has been an important milestone for us. This is a strong foundation. For more than 50 years Senger and autop have collaborated to form a strong partnership. A countless number of our lifts are working today in more than 39 locations of the Senger group with more than 3,000 employees.

We are internationally organized and represented worldwide through our partner network. We are convinced that you can find a lift from AUTOPSTENHOJ in your region.

Facts and figures on many references can be found under www.autopstenhoj.com.





We have our environment in mind.

On the topic of the environment, AUTOPSTENHOJ has to show its true colours. There is no question about whether you act ecologically, but how far you are going with this important point. We answer this question for you when it comes to lifts by using environmentally friendly hydraulic fluid. This is our standard for inground lifts – no exceptions. And also – for example in Germany – you don't need to notify the installation of our hydraulic inground lifts to the official institutes. They correspond to the latest Water Management Acts. For you this means:

- ❑ You satisfy the demands of the water authority and environment agencies.
- ❑ You save extra audit fees.
- ❑ You avoid annoying questions in the building applications.
- ❑ You can rely on the recommendations of the leading car manufacturers.

Safety through high rate of water-tightness:

All our steel cassettes are liquid-tight, this fact is certified and documented with a name plate. This is the highest rate of tightness and comes at no extra charge. And at least for AUTOPSTENHOJ this is standard.

Safety through double-walled construction:

The whole hydraulic fluid chamber is located inside of the lifting equipment, which is installed in a liquid-tight cassette. This design is a double-walled construction for maximum safety and environmental compliance. In the unlikely event of leakage, the lift will stop within seconds and can no longer achieve maximum lifting height. Any leaking fluid is collected inside the liquid-tight cassette, so no contamination will occur.

Accordance with local, legal regulations:

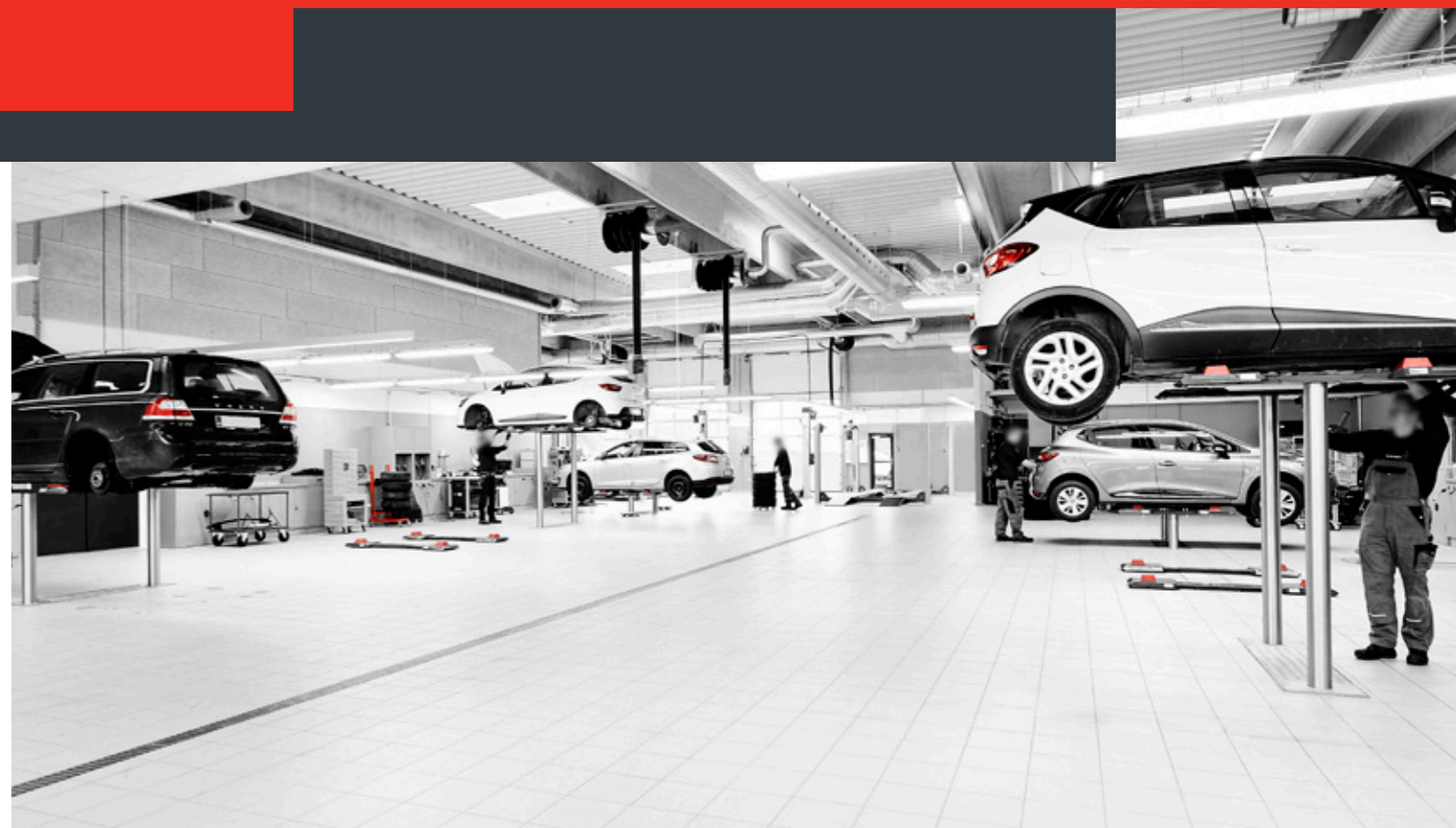
Each lift has to be checked in structural construction. This also includes a check of cassettes. Hydraulic hoses should be changed every six years, a recommendation we make for the sake of the environment and our customers.

Maximum safety with minimum oil:

Our lifts only require very little hydraulic fluid to work safely and reliably. Lifts with a capacity of 3.5 t need only 8 to 10 liters of hydraulic fluid, higher capacities require a maximum of 17 liters.

Our advice for you: a simple change.

If your lifts are not filled with environmentally friendly liquid, we can advise you how to change it.





Inground lifts

□ Product benefits /arguments.....	18
□ Single-ram lifts.....	24
- Sololift 1.35 Pv Ø 213.....	24
- Sololift 1.35 Saa Ø 213.....	26
- Sololift 1.35 Fv Uni Ø 213.....	28
□ Twin-ram lifts.....	30
- Eurolift 2.30 Pv.....	30
- Masterlift 2.30 Sa 260 Supersport.....	32
- Masterlift 2.35 Pv.....	34
- Masterlift 2.35 Saa.....	36
- Masterlift Tele 2.35 Saa.....	38
- Masterlift 2.35 Saav 135 VAN.....	40
- Masterlift 2.35 Combi Check-in – KA 1550.....	42
- Masterlift 2.35 Combi Check-in – KA 1335.....	44
- Masterlift 2.35 Fn 440 Check-in.....	46
- Masterlift 2.35 Fv Uni.....	48
- Profilift 2.40 F460 /Fn460.....	50
- Biglift 2.55 Saa.....	52
- Biglift 2.55 Saav 145 Jumbo.....	54
- Biglift 2.65 Saaa.....	56
- Biglift 2.65 F 550.....	58
- Biglift 4.55 Combi.....	60
□ 4-ram lifts.....	62
- Sharklift 4.55 F480/550 (KA 1550/3000).....	62
- Sharklift 4.65 F 480/550 (KA 1550/3000).....	64
□ Heavy duty lifts.....	66
- Macro 100, 150 & 200.....	66
□ Accessories.....	68
- Jet Cleaner RC 82/122.....	68
- Lifting pads, rubber pads, wheel support devices.....	70
- Wheel support devices.....	72

Our inground lifting technology.



Find out more:
www.autopstenhoj.com

Our technology in the ground

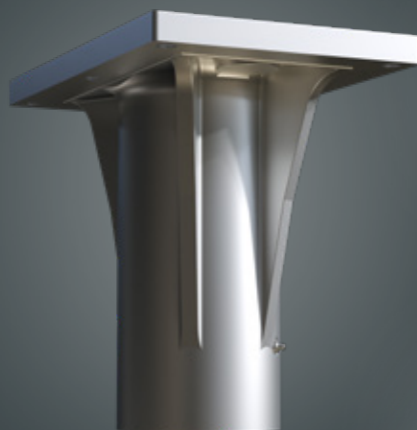
We offer 5 years' warranty on high pressure seals, cylinder bearings and synchronization devices of our inground lifts*

* The warranty only applies if the annual maintenance has been carried out by trained and certified specialist personnel and has been documented accordingly.



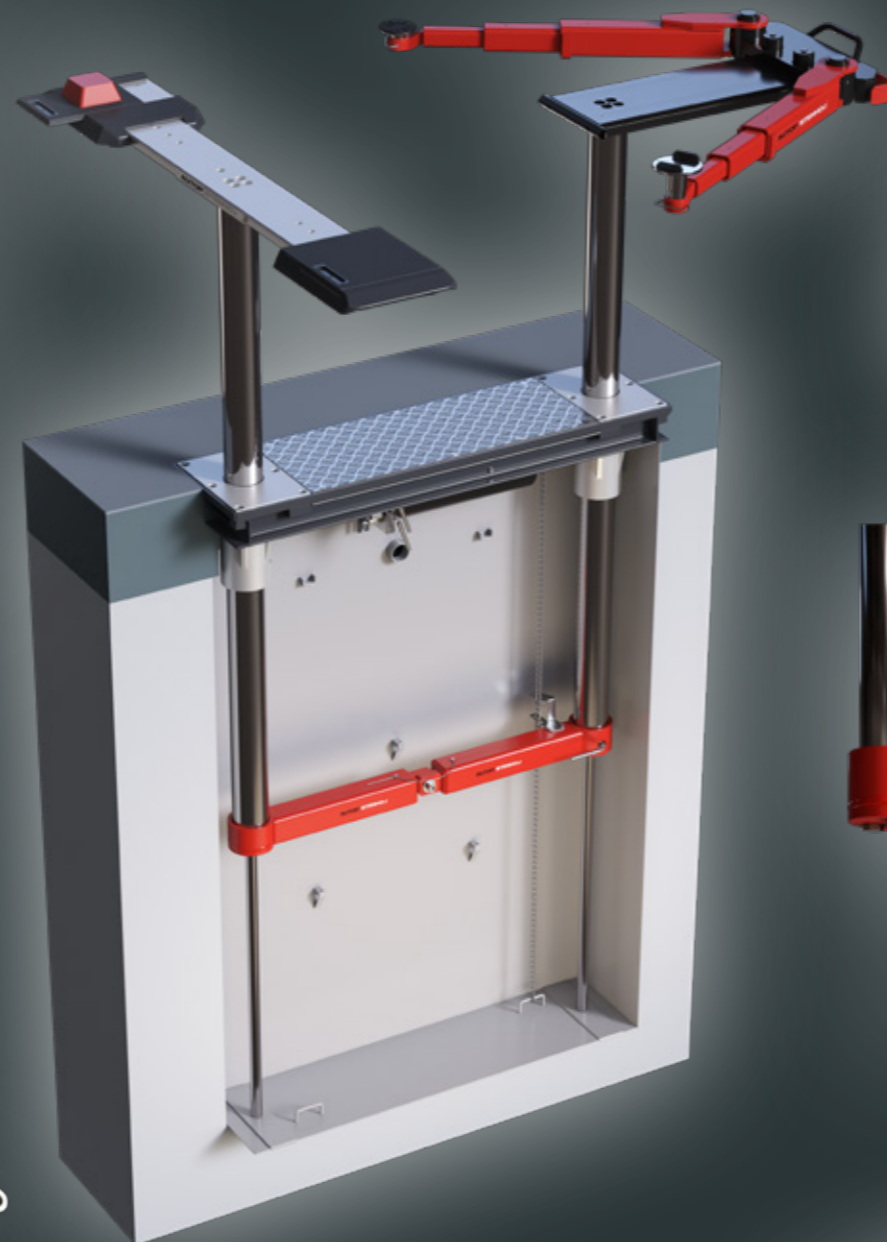
Strong guide bearing

- Construction design in absolute perfection
- Corrosion-free aluminium bearings
- Optimal overall height supports stability
- Permanently attractive appearance



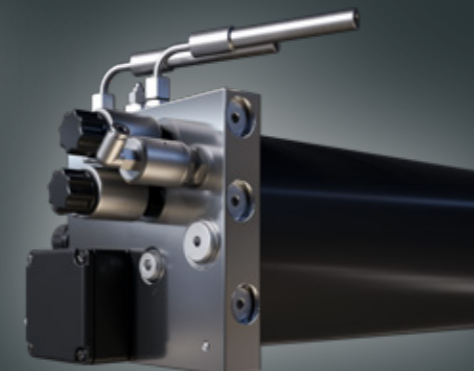
Safe lifting cylinder

- Hard chrome plated sliding surface
- Precisely fitting piston guidance via sliding bands
- Inversed cylinder with protected piston seal
- Environmentally friendly hydraulic fluid in extremely small quantities



Reliable hydraulic power unit

- Liquid cooled drive motor
- No leakage due to aluminium distributor head
- Constant lifting and lowering times
- Low power consumption
- With pneumatic emergency drain and additional oil filter as standard



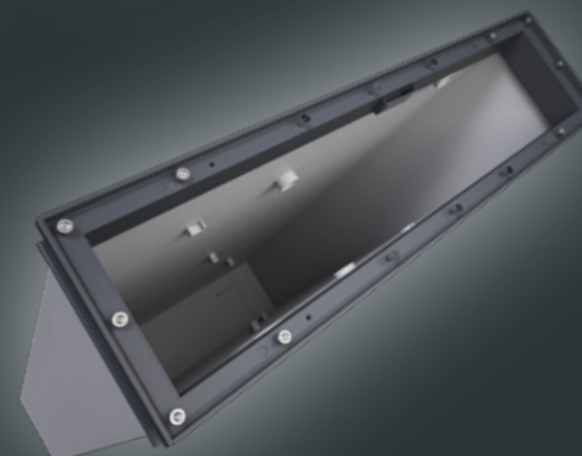
Optimal connection

- Devised synchronization device with flexible bearing
- Smooth and perfectly synchronized lifting and lowering
- Mechanical safety device in case of one-side pressure loss
- Completely maintenance- and wear-free



Liquid-tight installation cassettes

- Delivery with tightness certificate
- Wide range of designs for special installation situations



Strong, reliable and durable

Our Solutions



Many advantages, perfectly combined.

AUTOPSTENHOJ inground lifts impress with

- ☐ A lasting good look
- ☐ The workshop always looks tidy
- ☐ No columns disturb the view
- ☐ Inground lifts are easy to drive over
- ☐ The room height can be neglected
- ☐ Door clearance is always available when working on the vehicle
- ☐ Inground lifts require less space, that means more workstations can be set up in a smaller area

Benefit from more than 70 years of experience in the field of inground technology.

More benefits:

- ☐ More lifts per workshop for higher revenue
- ☐ Perfectly moving space
- ☐ Ergonomic workstations
- ☐ Satisfied employees
- ☐ Large range of accessories
- ☐ High planning reliability
- ☐ Extremely low maintenance
- ☐ Long lifetime
- ☐ No break-down losses
- ☐ Low energy consumption
- ☐ Good Return on Investment



Everything is possible with unique solutions.

Our lift program comprises electro-hydraulic lifts with 1, 2 or 4 rams and lifting capacities from 3 to 6.5 t. We cover all applications: from the check-in area to the mechanical workshop, as well as body repair, diagnostic and car care. And this also includes customized solutions. Our range of swivel arm lifts with the various accessories ensures professional lifting of the ever-growing range of car models from the different car manufacturers. We offer flexible solutions to a huge diversity of cars!

A lift name says more than a thousand words: designations and their meaning.

Each and every AUTOPSTENHOJ lift has a clear designation. The few letters and digits give you very important information; Example below:



Check-in: The perfect solution for your customer.

- We are the pioneers of the concept of check-in – since the early 1970's.
- Shows problems and solutions directly on the car - as a confidence building measure.
- Uses the pleasant ambience to communicate openly about solutions and cost.
- Uses the direct contact to attract attention to other promotions and offers.

Repairs and maintenance: Everything can be handled, as it should be.

- Utilize the optimum working conditions in all working bays.

Diagnosis: It is worth taking a closer look.

- Create a well-planned working area for the complex function tests and OE-Approvals / recommendations.

Body work: A benefit, not only for accident damaged cars.

- Take advantage of the free access to all parts of the vehicle.
- An alignment bench can be used without problems.

Car care: Long term shine.

- Rely on our perfect water and corrosion protection for a long lift life.

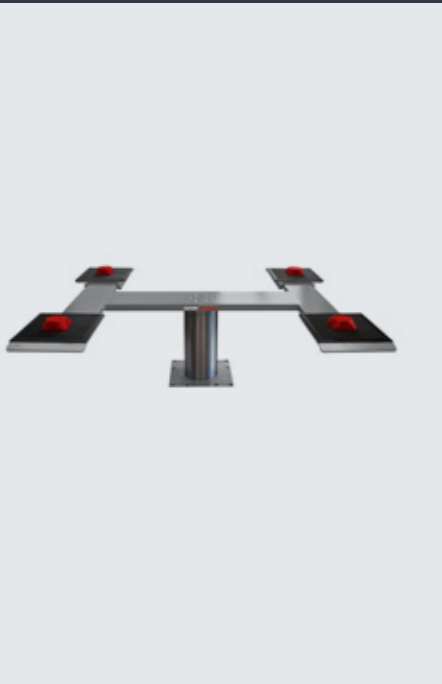
Sololift 1.35 Pv Ø 213

Electro-hydraulic single-ram lift, 3.5 t capacity, flat lifting supports



Click the QR-Code for detailed product information.

Further Information on www.autopstenhoj.com



Technical data	
Lifting capacity	3,500 kg
Lifting height	1,910 mm
Working height	1,975 mm + rubber pads
Cylinder diameter	213 mm
Lifting / lowering time (high pressure)	approx. 30 sec.
Foundation depth	2,650 mm
Pump unit	3 kW
Hydraulic oil	14 l
Voltage	230 / 400 V – 50 Hz – 16 A

Pv superstructure	
Total length min. – max.	120-180: ~ 1,200 - 1,800 mm
	140-200: ~ 1,400 - 2,000 mm
	160-220: ~ 1,600 - 2,200 mm
	170-240: ~ 1,700 - 2,400 mm
Min. height	65 mm

Application

- ☐ Check-in
- ☐ Wash
- ☐ Repairs and maintenance
- ☐ Testing

Recommendation/ Approval

- ☐ Renault
- ☐ SL 1.35 Pv 140-200: Opel
- ☐ Volkswagen Group

Description:

Steel cassette:

- ☐ Waterproof steel cassette
- ☐ Self-carrying

Hydraulic unit:

- ☐ Hard-chrome plated cylinder
- ☐ High stability (Cyl. Ø213mm)
- ☐ Integrated anti-rotation device
- ☐ Corrosion-free guiding element
- ☐ Pump unit with immersed motor for fitting on wall
- ☐ Hydraulic oil
- ☐ Pneumatic emergency lowering
- ☐ Programmable pushbutton control unit
- ☐ Alarm signal / CE-stop

Superstructure:

- ☐ 2 flat lifting supports in different lengths available
- ☐ Rubber-coated, non-skid pads
- ☐ Low minimum height

Standard colours:

- ☐ Standard surface-treatment: Zinc-coated and painted in RAL 9006 white aluminium

Versions:

Steel cassette:

- ☐ Hot galvanized
- ☐ Coated

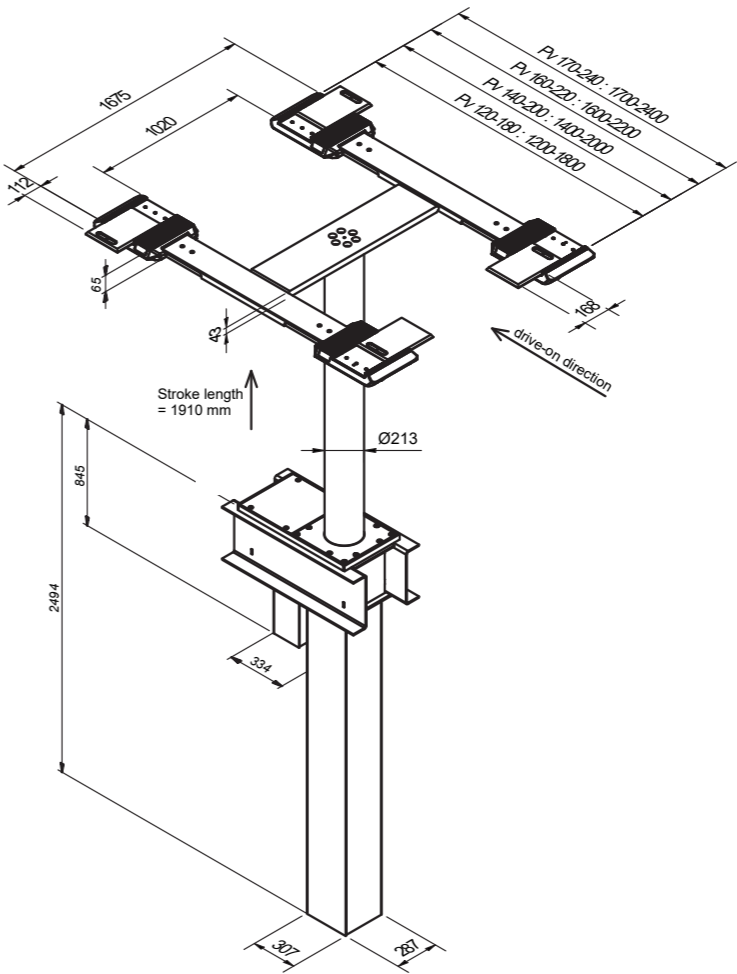
Installation:

- ☐ Superstructure on floor
- ☐ Ceiling installation
- ☐ Hydraulic pump unit in floor
- ☐ Hydraulic pump unit on wall

Optional extras:

- ☐ XY-pads
- ☐ Sets of rubber blocks, 40, 60, 80 and 100 mm

Special colours available on request!



Cover



Various pads



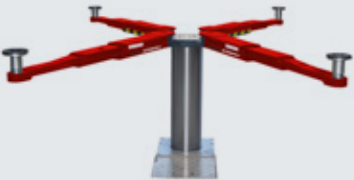
XY-pads with rubber

Sololift 1.35 Saa Ø 213

Electro-hydraulic single-ram lift, 3.5 t capacity, superstructure with arms



Click the QR-Code
for detailed product information.
Further Information on
www.autopstenhoj.com



Technical data	
Lifting capacity	3,500 kg
Lifting height	1,910 mm
Working height	2,005 - 2,045 mm
Cylinder diameter	213 mm
Lifting / lowering time (high pressure)	approx. 30 sec.
Foundation depth	2,650 mm
Pump unit	3 kW
Hydraulic oil	14 l
Voltage	230 / 400 V – 50 Hz – 16 A

Arm superstructure	
Min. height with pad No.	11027 (95 - 135 mm)
Arm length, min. - max.	636 - 1,290 mm
Construction height	94 mm

Application

- ☐ Repairs and maintenance
- ☐ Body work

Approvals / recommendations

- ☐ Volkswagen Group
- ☐ Renault

Description:

Steel cassette:

- ☐ Waterproof steel cassette
- ☐ Self-carrying

Hydraulic unit:

- ☐ Hard-chrome plated cylinder
- ☐ High stability (Cyl.-Ø213mm)
- ☐ Integrated anti-rotation device
- ☐ Corrosion-free guiding elements
- ☐ Pump unit with immersed motor for fitting in floor
- ☐ Hydraulic oil
- ☐ Pneumatic emergency lowering
- ☐ Programmable pushbutton control unit
- ☐ Alarm signal / CE-stop

Superstructure:

- ☐ Double telescopic arms
- ☐ Internal arm locking system
- ☐ Low minimum height

Standard colours:

- ☐ Base plate: RAL 7016 - grey
- ☐ Arms: RAL 3020 - red

Versions:

Steel cassette:

- ☐ Hot galvanized
- ☐ Coated

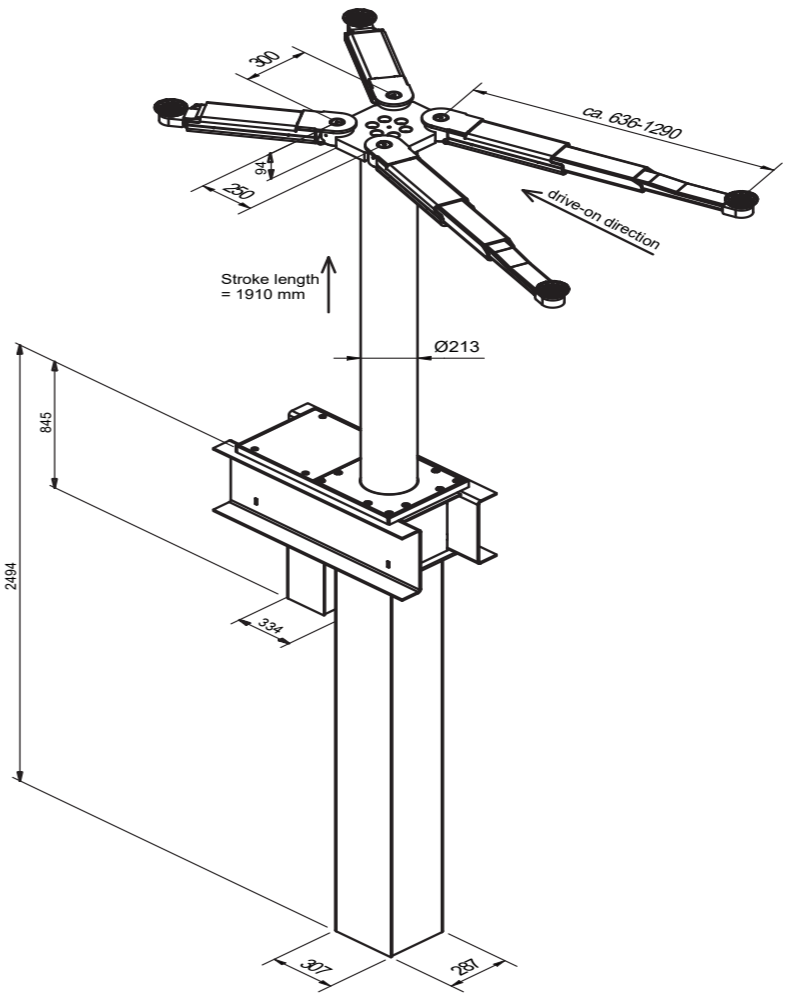
Installation:

- ☐ Superstructure on floor
- ☐ Ceiling installation
- ☐ Hydraulic pump unit in floor

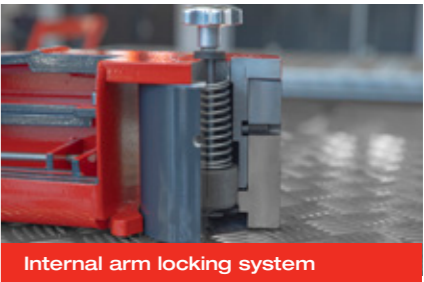
Optional extras:

- ☐ Large program of extra pads

Special colours available on request!



Corrosion-free guiding elements



Internal arm locking system



Hard-chrome plated cylinder

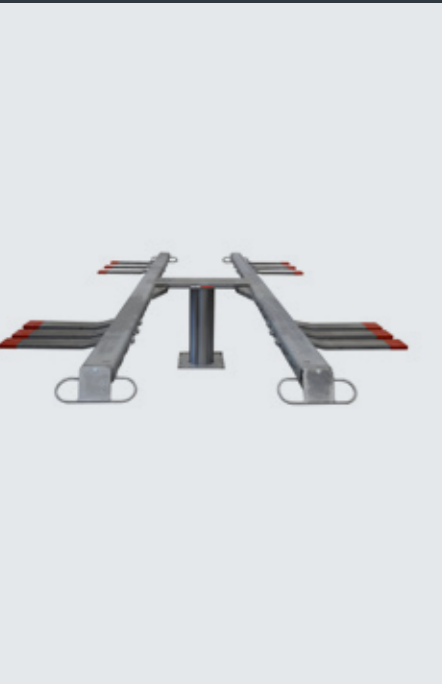
Sololift 1.35 Fv Uni Ø 213

Electro-hydraulic single-ram lift, 3.5 t capacity, superstructure with lifting blades



Click the QR-Code for detailed product information.

Further Information on www.autopstenhoj.com



Technical data	
Lifting capacity	3,500 kg
Lifting height	1,910 mm
Working height	1,930 mm
Cylinder diameter	213 mm
Lifting / lowering time (high pressure)	approx. 30 sec.
Foundation depth	2,650 mm
Motor	3 kW
Hydraulic oil	14 l
Voltage	230/400 V – 50 Hz –16 A

Fv Uni Superstructure	
Total length	4,658 mm
Wheel base, min. - max.	1,600 – 3,900 mm
Total width	1,050 / 2,106 mm
Min. height	20/80 mm

Application

- ☐ Check-in
- ☐ Wash
- ☐ Repairs and maintenance

Approvals / recommendations

- ☐ Volkswagen Group

Description:

Steel cassette:

- ☐ Waterproof steel cassette
- ☐ Self-carrying

Hydraulic unit:

- ☐ Hard-chrome plated cylinder
- ☐ High stability (Cyl. Ø213mm)
- ☐ Integrated anti-rotation device
- ☐ Corrosion-free guiding element
- ☐ Pump unit with immersed motor for fitting on wall
- ☐ Hydraulic oil
- ☐ Pneumatic emergency lowering
- ☐ Programmable pushbutton control unit
- ☐ Alarm signal / CE-stop

Superstructure:

- ☐ Superstructure with lifting blades on floor
- ☐ Adaptation to various wheel bases by re-positioning of lifting blades
- ☐ Low minimum height

Standard surface-treatment:

- ☐ Hot galvanized

Versions:

Steel cassette:

- ☐ Hot galvanized
- ☐ Coated

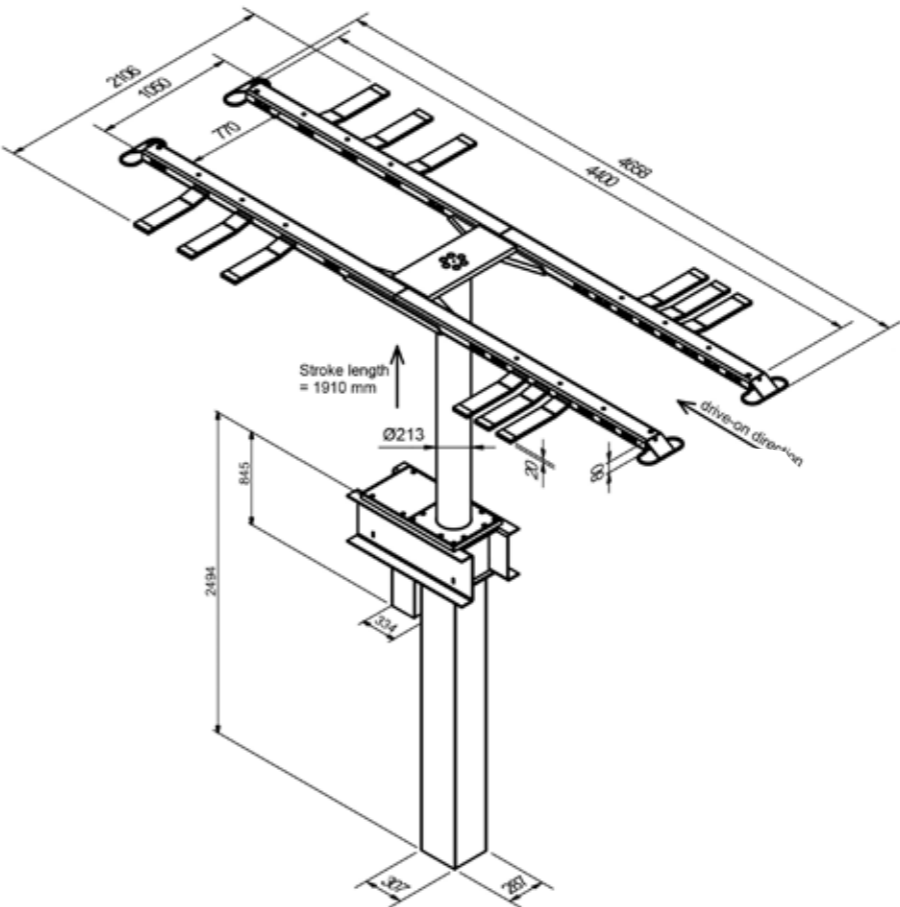
Installation:

- ☐ Superstructure on floor
- ☐ Ceiling installation
- ☐ Hydraulic pump unit in floor
- ☐ Hydraulic pump unit on wall

Optional extras:

- ☐ Extra lifting blades

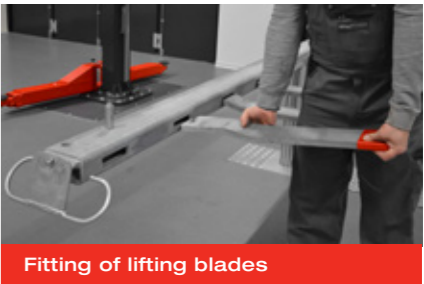
Zinc coating on request!



Hard-chrome plated cylinder



Cover



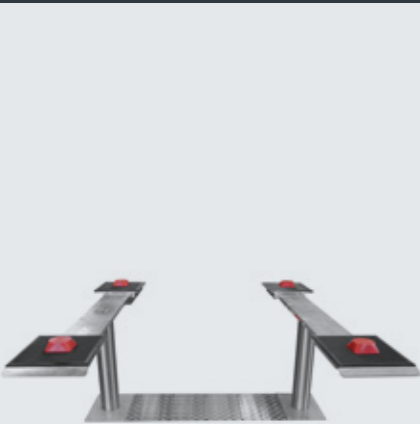
Fitting of lifting blades

Eurolift 2.30 Pv

Electro-hydraulic twin-ram lift, 3 t capacity, superstructure with flat lifting supports



Click the QR-Code
for detailed product information.
Further Information on
www.autopstenhoj.com



Technical data	
Lifting capacity	3,000 kg
Lifting height	1,950 mm
Working height	2,020 mm + rubber pads
Cylinder diameter	2 x 123 mm
Distance between cylinders	1,335 mm
Lifting / lowering time (high pressure)	approx. 30 sec.
Foundation depth	2,625 mm
Pump unit	3 kW
Hydraulic oil	10 l
Voltage	230 / 400 V – 50 Hz – 16 A

Pv superstructure	
Total length min. – max.	120-180: approx. 1,200 – 1,800 mm 140-200: approx. 1,400 – 2,000 mm 160-220: approx. 1,600 – 2,200 mm
Min. height	70 mm

Application

- ☐ Check-in
- ☐ Wash
- ☐ Repairs and maintenance
- ☐ Testing

Approvals / recommendations

- ☐ Volvo

Description:

Steel cassette:

- ☐ Waterproof steel cassette

Hydraulic unit:

- ☐ Hard-chrome plated cylinder
- ☐ Integrated anti-rotation device
- ☐ Corrosion-free guiding elements
- ☐ Pump unit with immersed motor for fitting on wall
- ☐ Non-hazardous hydraulic oil
- ☐ Pneumatic emergency lowering
- ☐ Programmable pushbutton control unit

Superstructure:

- ☐ Stable lifting supports, lengthwise adjustable (120 – 180, 140 – 200, 160 – 220)
- ☐ Rubber-coated, non-skid pads
- ☐ Low minimum height

Standard colours:

- ☐ Zinc-coated

Versions:

Steel cassette:

- ☐ Zinc-coated
- ☐ Coated
- ☐ Self-carrying

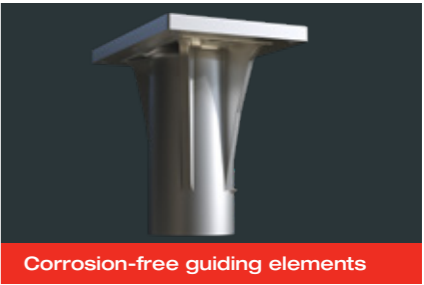
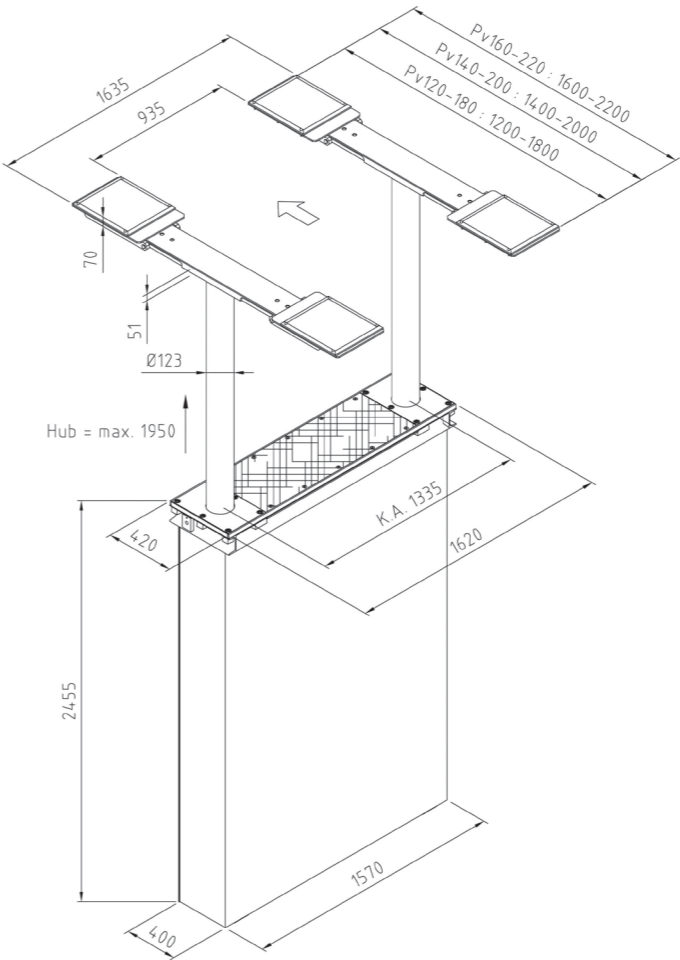
Installation:

- ☐ Superstructure on floor
- ☐ Superstructure in floor
- ☐ Ceiling installation

Optional extras:

- ☐ XY-pads
- ☐ Sets of rubber blocks, 40, 60, 80 and 100 mm
- ☐ Traverse

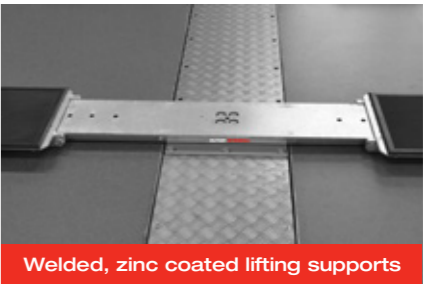
Zinc coating and special colours on request!



Corrosion-free guiding elements



Hard-chrome plated cylinder



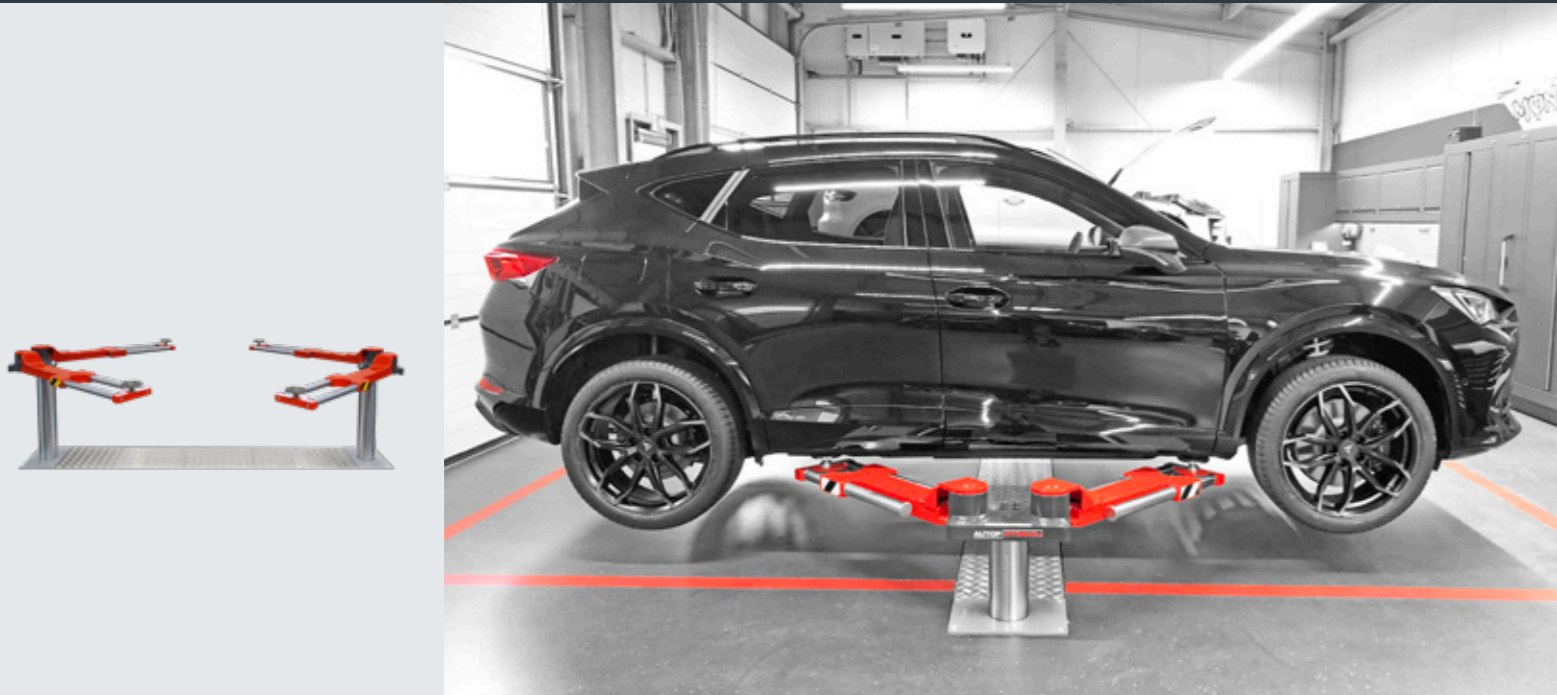
Welded, zinc coated lifting supports

Masterlift 2.30 Sa 260 Supersport

Electro-hydraulic twin-ram lift, 3.0 t capacity, superstructure with arms



Click the QR-Code for detailed product information.
Further Information on www.autopstenhoj.com



Technical data	
Lifting capacity	3,000 kg
Lifting height	1,960 mm
Working height	2,030 - 2,055 mm
Cylinder diameter	2 x 140 mm
Distance between cylinders	2,600 mm
Lifting / lowering time (high pressure)	approx. 30 sec.
Foundation depth	2,625 mm
Pump unit	3 kW
Hydraulic oil	10 l
Voltage	230 / 400 V – 50 Hz – 16 A

Arm superstructure	
Total width	3,000 mm
Lifting pad included in the delivery	29265 (70 – 95 mm)
Min. height	70 – 95 mm
Drive-through width	2,455 mm
Arm length, min. - max.	760 – 1,252 mm

Application

- ☐ Repairs and maintenance
- ☐ Body work

Description:

- Steel cassette:**
- ☐ Waterproof steel cassette

- Hydraulic unit:**
- ☐ Hard-chrome plated cylinder
 - ☐ Flexible synchronization and safety system
 - ☐ Corrosion-free guiding elements
 - ☐ Hydraulic pump unit with immersed motor
 - ☐ Ecological hydraulic fluid
 - ☐ Pneumatic emergency lowering
 - ☐ Programmable pushbutton control unit

- Superstructure:**
- ☐ Two extra-flat sports arms, single telescopic
 - ☐ Simple arm locking system
 - ☐ Low minimum height

- Standard colours:**
- ☐ Base plates: RAL 7016 - grey
 - ☐ Arms: RAL 3020 - red

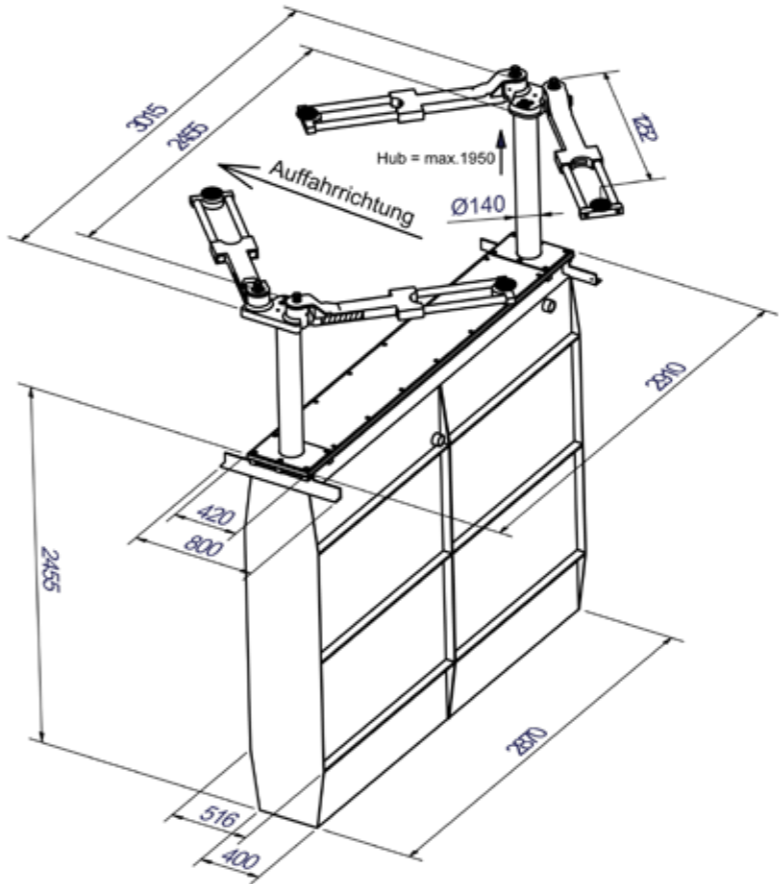
Versions:

- Steel cassette:**
- ☐ Zinc-coated
 - ☐ Coated
 - ☐ Self-carrying
- Installation:**
- ☐ Superstructure on floor
 - ☐ Ceiling installation

Optional extras:

- ☐ Large program of extra pads

Zinc coating and special colours on request!



Extra flat superstructure



Double guided arm extension



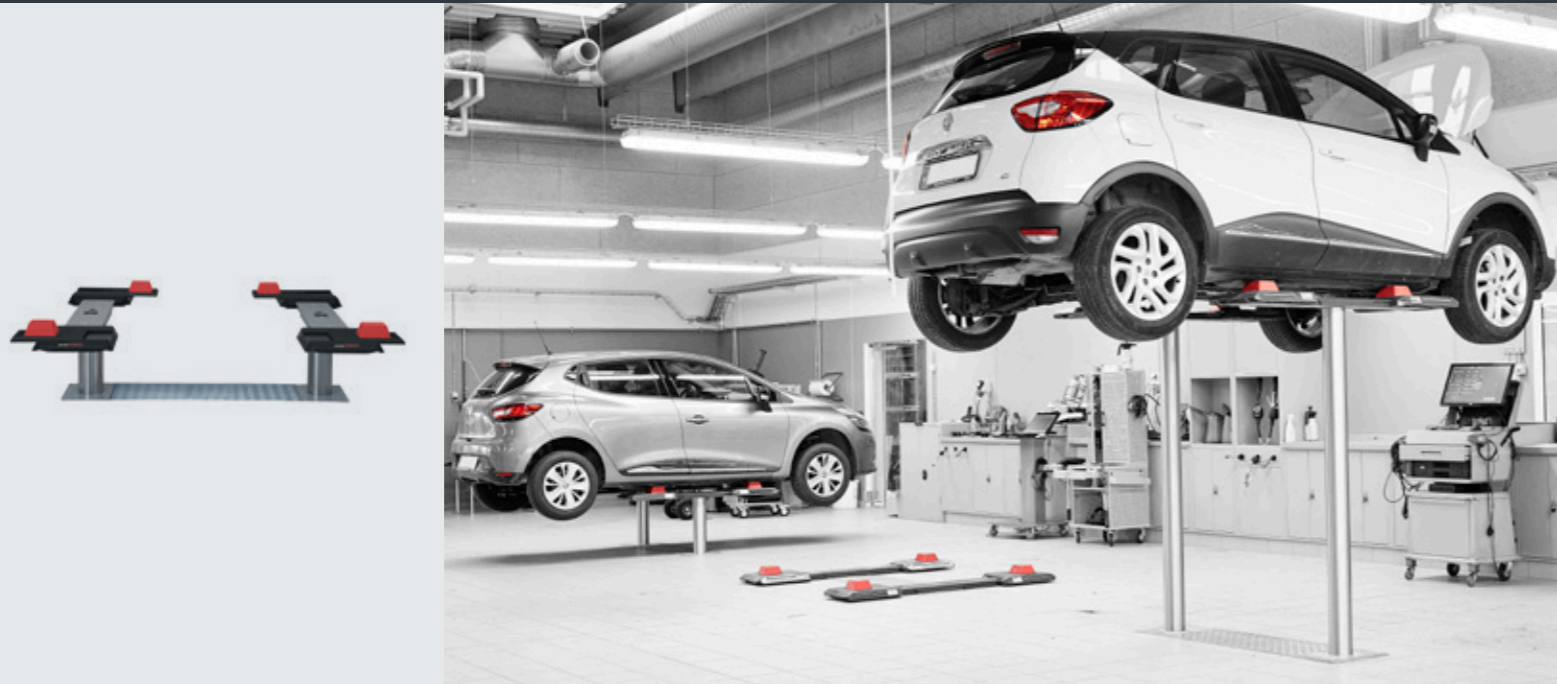
Can be combined with pad extension

Masterlift 2.35 Pv

Electro-hydraulic twin-ram lift, 3.5 t capacity, superstructure with flat lifting supports



Click the QR-Code for detailed product information.
Further Information on www.autopstenhoj.com



Technical data	
Lifting capacity	3,500 kg
Lifting height	1,950 mm
Working height	2,015 mm + rubber pads
Cylinder diameter	2 x 123 mm
Distance between cylinders	1,335 mm
Lifting / lowering time (high pressure)	approx. 30 sec.
Foundation depth	2,625 mm
Pump unit	3 kW
Hydraulic oil	10 l
Voltage	230 / 400 V – 50 Hz – 16 A

Pv superstructure	
Total width min. – max.	120 – 180: approx. 1,200 – 1,800 mm
	140 – 200: approx. 1,400 – 2,000 mm
	160 – 220: approx. 1,600 – 2,200 mm
	170 – 240: approx. 1,700 – 2,400 mm
Min. height	65 mm

Application

- ☐ Check-in
- ☐ Wash
- ☐ Repairs and maintenance
- ☐ Testing

Approvals / recommendations

- ☐ Renault
- ☐ ML 2.35 Pv 140-200: Opel
- ☐ ML 2.35 Pv 160-220 xy: Mercedes-Benz, Volkswagen Group
- ☐ ML 2.35 Pv 170-240: BMW / Mini
- ☐ ML 2.35 Pv 160-220 Premium: Volvo

Description:

Steel cassette:

- ☐ Waterproof steel cassette

Hydraulic unit:

- ☐ Hard-chrome plated cylinder
- ☐ Flexible synchronization and safety system
- ☐ Corrosion-free guiding elements
- ☐ Pump unit with immersed motor
- ☐ Hydraulic oil
- ☐ Pneumatic emergency lowering
- ☐ Programmable pushbutton control unit

Superstructure:

- ☐ Stable lifting supports, lengthwise adjustable
- ☐ Rubber-coated, non-skid pads
- ☐ Low minimum height

Standard colours:

- ☐ Pv Standard: zinc coated
- ☐ Pv Premium: zinc coated and painted RAL 9006 – white aluminum

Versions:

Steel cassette:

- ☐ Zinc-coated
- ☐ Coated
- ☐ Self-carrying

Superstructure:

- ☐ Lifting supports in different lengths (120-180, 140-200, 160-220 & 170-240)

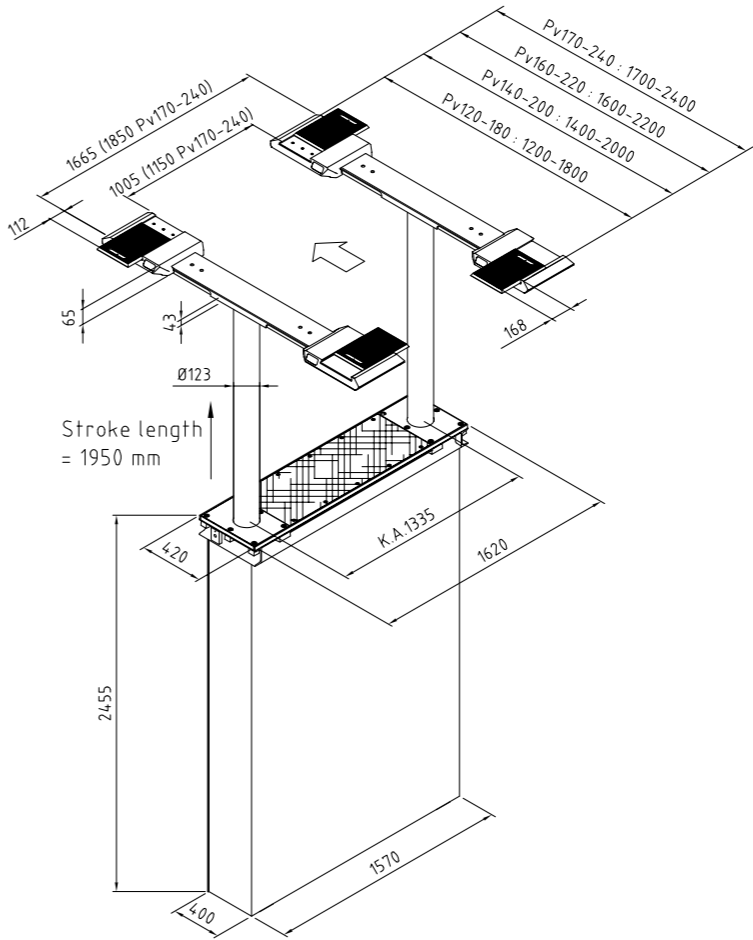
Installation:

- ☐ Superstructure on floor
- ☐ Superstructure in floor
- ☐ Ceiling installation

Optional extras:

- ☐ XY-pads
- ☐ Sets of rubber blocks, 40, 60, 80 and 100 mm
- ☐ Traverse

Zinc coating and special colours on request!



XY-pads with rubber



Various pads



Solid lifting supports, zinc coated and painted

Masterlift 2.35 Saa

Electro-hydraulic twin-ram lift, 3.5 t capacity, superstructure with arms



Click the QR-Code
for detailed product information.
Further Information on
www.autopstenhoj.com



Technical data	
Lifting capacity	3,500 kg
Lifting height	Saa 230: 1,950 mm Saa 260: 1,900 mm
Working height	Saa 230: 2,020 - 2,085 mm Saa 260: 1,970 - 2,035 mm
Cylinder diameter	Saa 230: 2 x 123 mm Saa 260: 2 x 140 mm
Distance between cylinders	Saa 230: 2,285 mm Saa 260: 2,600 mm
Lifting / lowering time (high pressure)	approx. 30 sec.
Foundation depth	2,625 mm
Pump unit	3 kW
Hydraulic oil	10 l
Voltage	230 / 400 V – 50 Hz – 16 A

Arm superstructure	
Total width	3,000 mm
Lifting pad included in the delivery	Uni: 11027 (95 – 135 mm) Sport: 29265 (70 – 95 mm)
Min. height	Uni: 95 – 135 mm Sport: 70 – 95 mm
Drive-through width	Saa 230: 2,160 mm Saa 260: 2,455 mm
Arm length, min. - max.	658 – 1,313 mm

Application

- Repairs and maintenance
- Body work

Approvals / recommendations

- Renault
- Saa 230:
BMW / Mini,
Rolls-Royce,
Volkswagen Group,
Volvo
- Saa 260:
Mercedes-Benz

Description:

- Steel cassette:
- Waterproof steel cassette

- Hydraulic unit:
- Hard-chrome plated cylinder
 - Flexible synchronization and safety system
 - Corrosion-free guiding elements
 - Pump unit with immersed motor
 - Hydraulic oil
 - Pneumatic emergency lowering
 - Programmable pushbutton control unit

- Superstructure:
- Double-telescopic arms
 - Internal arm locking system
 - Low minimum height - perfect for sports cars - with a minimum height under 100 mm

- Standard colours:
- Base plates: RAL 7016 - grey
 - Arms: RAL 3020 - red

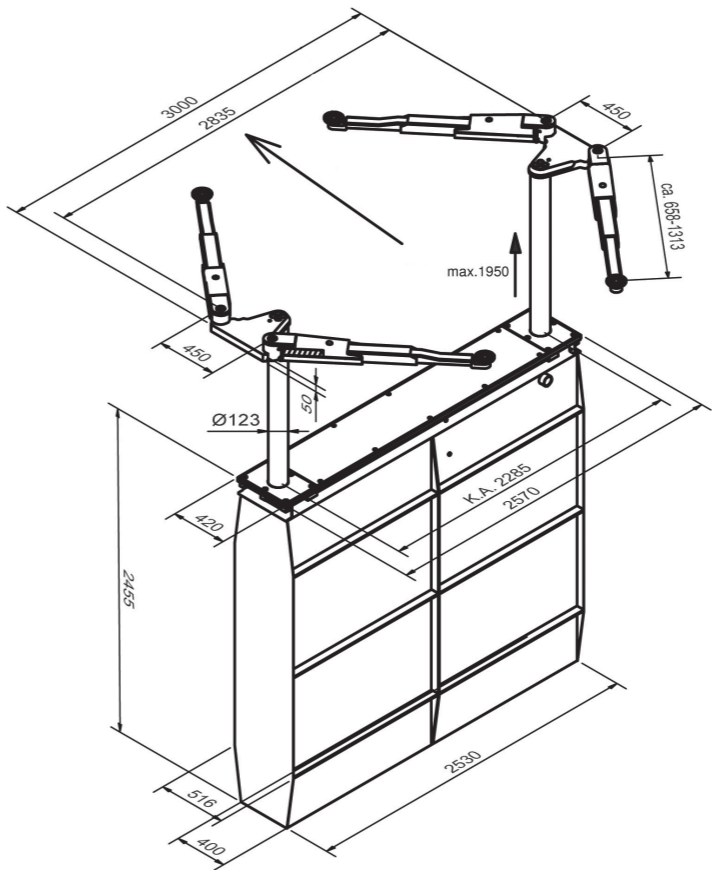
Versions:

- Steel cassette:
- Zinc-coated
 - Coated
 - Self-carrying
- Installation:
- Superstructure on floor
 - Superstructure in floor
 - Ceiling installation
- Versions:
- Saa 230 & Saa 260
also available as
Sport & Universal versions

Optional extras:

- Large program of extra pads

Zinc coating and special
colours on request!



Very low arm construction



Pad and pad extensions



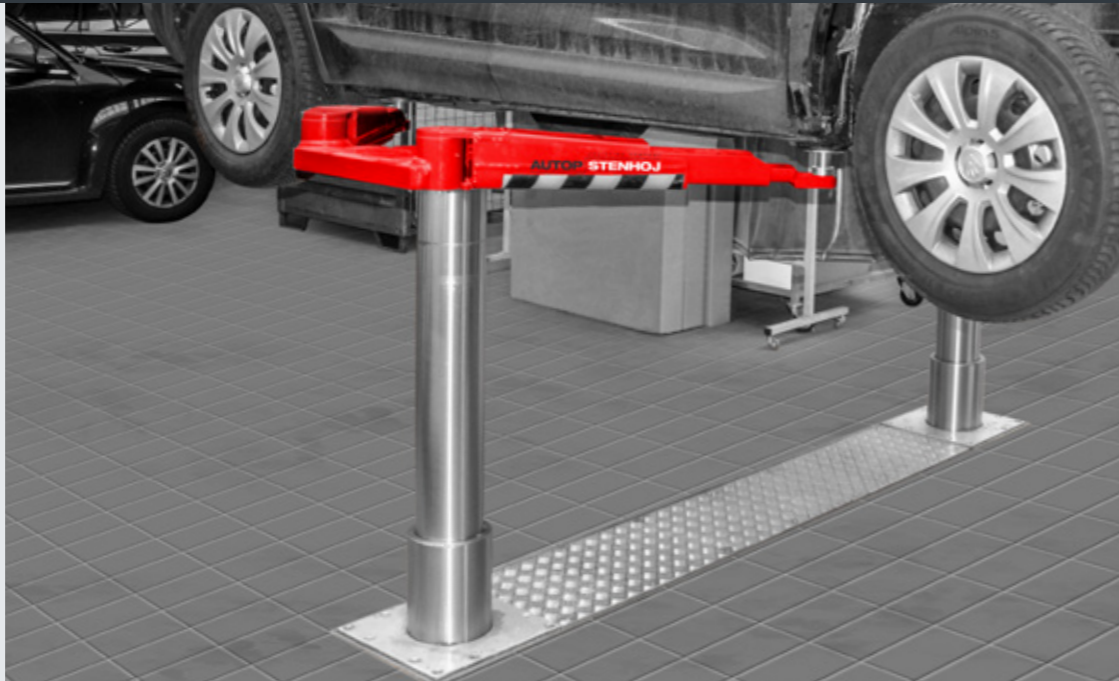
Internal arm locking system

Masterlift Tele 2.35 Saa

Electro-hydraulic twin-ram telescopic lift, 3.5 t capacity, superstructure with arms



Scan the QR-Code
for detailed product information.
Further Information on
www.autopstenhoj.com



Application

- ☐ Body work
- ☐ Repair and maintenance

Description:

Steel cassette:

- ☐ Waterproof steel cassette
- ☐ Self-carrying, therefore especially usable for ceiling installation

Hydraulic unit:

- ☐ Hard-chrome plated telescopic reversed cylinders
- ☐ Electrical monitoring of synchronization through sensor ladder rack for main level and through wire potentiometer for telescopic level
- ☐ Pneumatically operated safety ratchet for main level
- ☐ Redundant hydraulic system for telescopic level
- ☐ Mechanic anti-rotation device in telescopic cylinders
- ☐ Corrosion-free guiding elements
- ☐ One hydraulic pump unit with immersed motor per cylinder section
- ☐ Ecological hydraulic fluid
- ☐ Pneumatic emergency lowering
- ☐ Automatic regulation of synchronization through programmable pushbutton control unit, therefore no mechanical connection between both cylinder sections
- ☐ Flexible cylinder distances up to max. 2,600 mm

Attention:

Lifting / lowering with just one cylinder section under load only after consultation of our technical department

Superstructure 2.35 Saa:

- ☐ Double-telescopic arms
- ☐ Internal arm locking system
- ☐ Low minimum height
- ☐ Low construction height at swivel arm bearing

- ☐ Perfect for sports cars - with a minimum height under 100 mm in a width of 1,900 mm

Standard colours:

- ☐ Base plates: RAL 7016 -grey
- ☐ Arms: RAL 3020 - red

Version:

Steel cassette:

- ☐ Hot galvanized
- ☐ Synthetic coating
- ☐ Fire protection covering

Installation:

- ☐ Superstructure on floor
- ☐ Ceiling installation

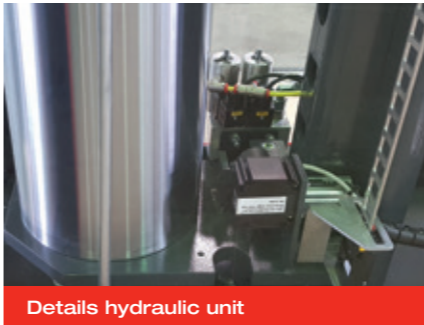
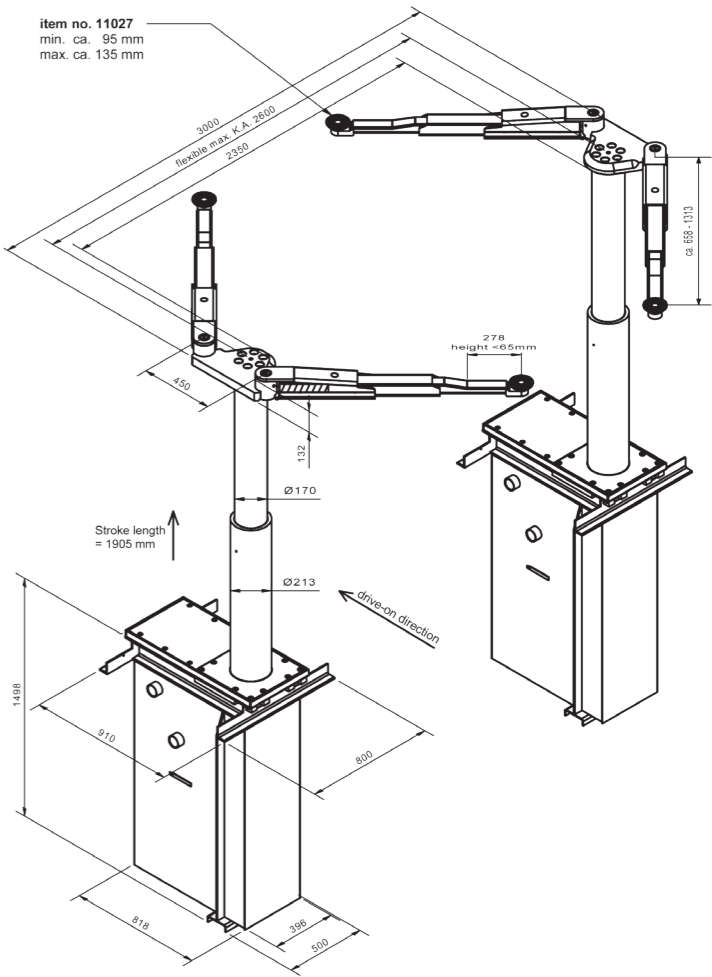
Optional extras:

- ☐ Large program of extra pads

Zinc coating and special colours on request!

Technical data	
Lifting capacity	3,500 kg
Stroke length	1,905 mm
Working height	Universal: 11027 (2,000 - 2,040 mm)
Cylinder diameter	Ø 213 / Ø 170
Distance between cylinders	flexible, max. 2,600 mm
Lifting / lowering time	approx. 30 / 43 sec.
Foundation depth	1,500 mm
Pump unit	2 x 3 kW
Hydraulic oil	22 l
Voltage	230 / 400 V – 50 Hz – 16 A

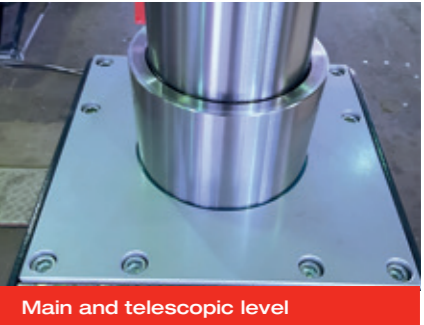
Arm superstructure	
Total width	3,000 mm
Inserting height in arm	42 mm
Lifting pad included in the delivery	Universal: 11027 (95 – 135 mm) Sport: 29265 (70 – 95 mm)
Min. height	Uni: 95 – 135 mm Sport: 70 – 95 mm
Drive-through width	Saa 230: 2,070 mm Saa 260: 2,385 mm
Arm length min. - max.	658 – 1,313 mm



Details hydraulic unit



Pushbutton control and cabinet



Main and telescopic level

Masterlift 2.35 Saav 135 VAN

Electro-hydraulic twin-ram lift, 3.5 t capacity, superstructure with adjustable arms



Click the QR-Code for detailed product information.

Further Information on www.autopstenhoj.com



Technical data	
Lifting capacity	3,500 kg
Lifting height	1,950 mm
Working height	2,020 – 2,085 mm
Cylinder diameter	2 x 123 mm
Distance between cylinders	1,335 mm
Lifting / lowering time (high pressure)	approx. 30 sec.
Foundation depth	2,625 mm
Pump unit	3 kW
Hydraulic oil	10 l
Voltage	230 / 400 V – 50 Hz – 16 A

Arm superstructure	
Total width	3,210 mm
Lifting pad included in the delivery	Uni: 11027 (95 – 135 mm) Sport: 29265 (70 – 95 mm)
Min. height	Uni: 95 – 135 mm Sport: 70 – 95 mm
Arm length, min. - max.	710 – 1,443 mm

Application

- Repairs and maintenance

Approvals / recommendations

- Jaguar
- Opel
- Renault
- Volkswagen Group
- Mercedes-Benz

Description:

Steel cassette:

- Waterproof steel cassette

Hydraulic unit:

- Hard-chrome plated cylinder
- Flexible synchronization and safety system
- Corrosion-free guiding elements
- Pump unit with immersed motor
- Hydraulic oil
- Pneumatic emergency lowering
- Programmable pushbutton control unit

Superstructure:

- Double-telescopic arms
- Internal arm locking system
- Low minimum height
- Suitable for wheel supports

Standard colours:

- Base plates: RAL 7016 - grey
- Arms and slider: RAL 3020 - red

Versions:

Steel cassette:

- Zinc-coated
- Coated
- Self-carrying

Installation:

- Superstructure on floor
- Ceiling installation

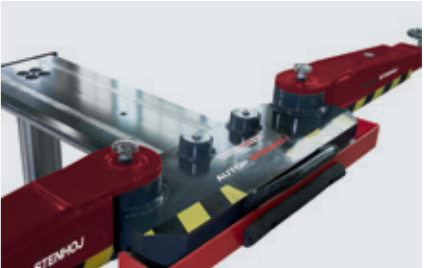
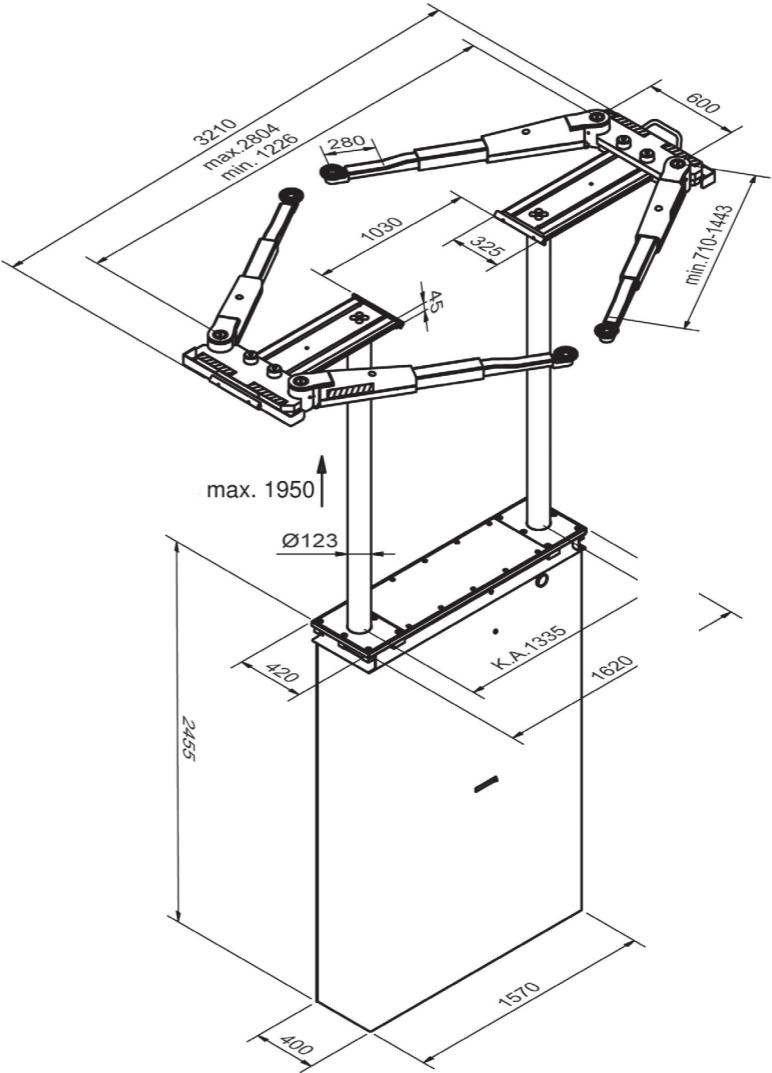
Versions:

- Sport & Universal versions

Optional extras:

- Large program of extra pads

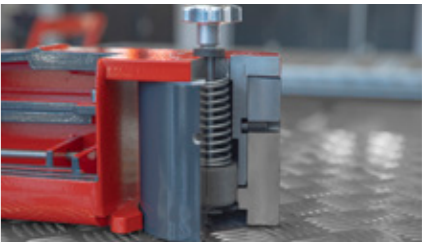
Zinc coating and special colours on request!



Slidable superstructure



Superstructure with lifting pads



Internal arm locking system

Masterlift 2.35 Combi Check-in – KA 1550

Electro-hydraulic 2x twin-ram lift, 3.5 t, platforms and free-wheel lift with flat lifting supports



Click the QR-Code
for detailed product information.

**Further Information on
www.autopstenhoj.com**



Technical data	
Lifting capacity	3,500 kg
Lifting height	1,870 mm
Working height	F: 1,965 mm RFH: 2,030 mm + Rubber pads
Cylinder diameter	4 x 140 mm
Distance between cylinders	1,550 mm
Lifting / lowering time (high pressure)	approx. 30 sec.
Foundation depth	2,625 mm
Pump unit	3 kW
Hydraulic oil	14 l
Voltage	230 / 400 V – 50 Hz – 16 A

Platforms	
Total length	5,580 mm
Usable length of platform	4,400 mm
Wheel base	approx. 3,900 mm
Platform width	650 mm
Distance between platforms	900 mm
Drive-on height	95 mm

Pv superstructure	
Total length min. – max.	120 – 180: approx. 1,200 – 1,800 mm
	140 – 200: approx. 1,400 – 2,000 mm
	160 – 220: approx. 1,600 – 2,200 mm
	170 – 240: approx. 1,700 – 2,400 mm
Min. height	65 mm

Application

- ☐ Check-in
- ☐ Testing

Approvals / recommendations

- ☐ Mercedes-Benz
- ☐ Volkswagen Group
- ☐ BMW / Mini

Description:

Steel cassette:

- ❑ Waterproof steel cassette

Hydraulic unit:

- ☐ Hard-chrome plated cylinder
- ☐ Flexible synchronization and safety system
- ☐ Corrosion-free guiding elements
- ☐ Pump unit with immersed motor
- ☐ Hydraulic oil
- ☐ Pneumatic emergency lowering
- ☐ Programmable pushbutton control unit

Superstructure:

- ❑ A set of platforms with drive-on ramps and stops
- ❑ Low drive-on angle ($< 8^\circ$), perfect for sports cars

Free-wheel device P_v :

- ☐ Stable lifting supports, lengthwise adjustable
- ☐ Rubber-coated, non-skid pads
- ☐ Low minimum height

Standard colours:

- ❑ Platforms: RAL 7016 - grey and aluminium coated and integrated LED lightning
- ❑ Pv Premium: RAL 9006 - white aluminum

Versions:

Steel cassette:

- ☐ Zinc-coated
- ☐ Coated

Superstructure Pv:

- Lifting supports in different lengths (120-180, 140-200, 160-220 & 170 - 240)

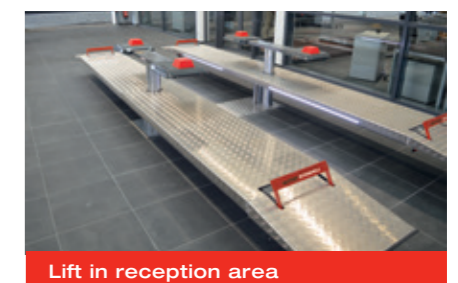
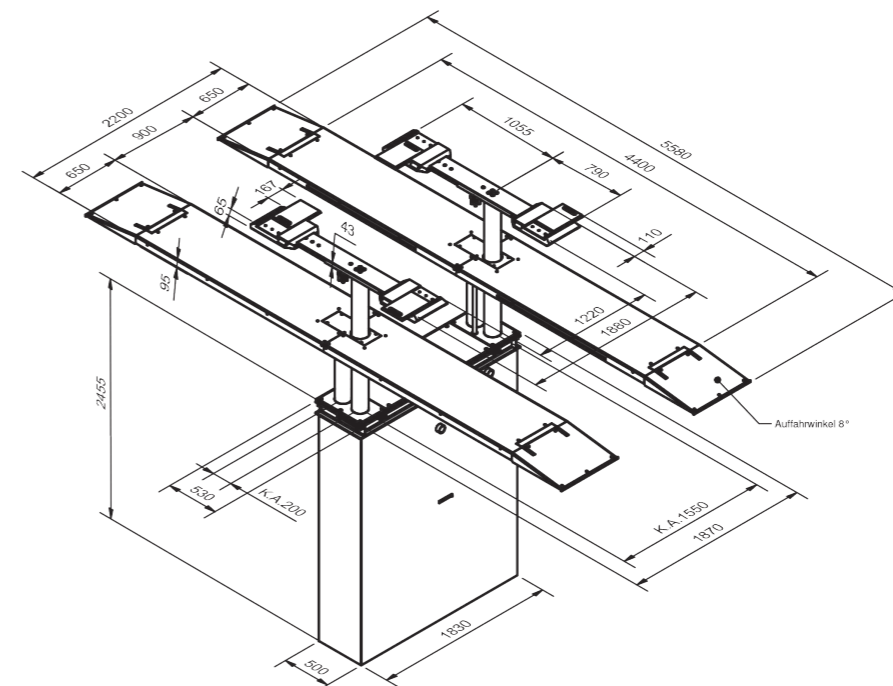
Installation:

- ☐ Superstructure on floor
- ☐ Superstructure in floor

Optional extras:

- ❑ XY-pads
- ❑ Sets of rubber blocks, 40, 60, 80 and 100 mm
- ❑ Large program of extra pads

Zinc coating and special colours on request!



Masterlift 2.35 Combi

Check-in – KA 1335

Electro-hydraulic 2x twin-ram lift, 3.5 t, platforms and free-wheel lift with flat lifting supports



Click the QR-Code for detailed product information.

Further Information on www.autopstenhoj.com



Technical data	
Lifting capacity	3,500 kg
Lifting height	1,835 mm
Working height	F: 1,930 mm RFH: 1,995 mm + Rubber pads
Cylinder diameter	4 x 123 mm
Distance between cylinders	1,335 mm
Lifting / lowering time (high pressure)	approx. 30 sec.
Foundation depth	2,625 mm
Pump unit	3 kW
Hydraulic oil	14 l
Voltage	230 / 400 V – 50 Hz – 16 A

Platforms	
Total length	5,130 mm
Usable legth of platform	4,400 mm
Wheel base	approx. 3,900 mm
Platform width	560 mm
Distance between platforms	920 mm
Drive-on height	95 mm
Pv superstructure	
Total length min. – max.	120–180: ~ 1.200 – 1,800 mm
	140–200: ~ 1.400 – 2,000 mm
	160–220: ~ 1.600 – 2,200 mm
	170–240: ~ 1.700 – 2,400 mm
Min. height	250 mm

Application

- ☐ Check-in
- ☐ Testing

Approvals / recommendations

- ☐ Volkswagen Group

Description:

Steel cassette:

- ☐ Waterproof steel cassette

Hydraulic unit:

- ☐ Hard-chrome plated cylinder
- ☐ Flexible synchronization and safety system
- ☐ Corrosion-free guiding elements
- ☐ Pump unit with immersed motor
- ☐ Hydraulic oil
- ☐ Pneumatic emergency lowering
- ☐ Programmable pushbutton control unit

Superstructure:

- ☐ A set of platforms with drive-on ramps and stops
- ☐ Lighting set incl.

Free-wheel device Pv:

- ☐ Stable lifting supports, lengthwise adjustable
- ☐ Rubber-coated, non-skid pads
- ☐ Low minimum height

Standard colours:

- ☐ Platforms: RAL 7016 - grey and aluminium coated
- ☐ RAL 9006 – white aluminium

Versions:

Steel cassette:

- ☐ Zinc-coated
- ☐ Coated
- ☐ Self-carrying

Superstructure Pv:

- ☐ Lifting supports in different lengths (120-180, 140-200, 160-220 & 170-240)

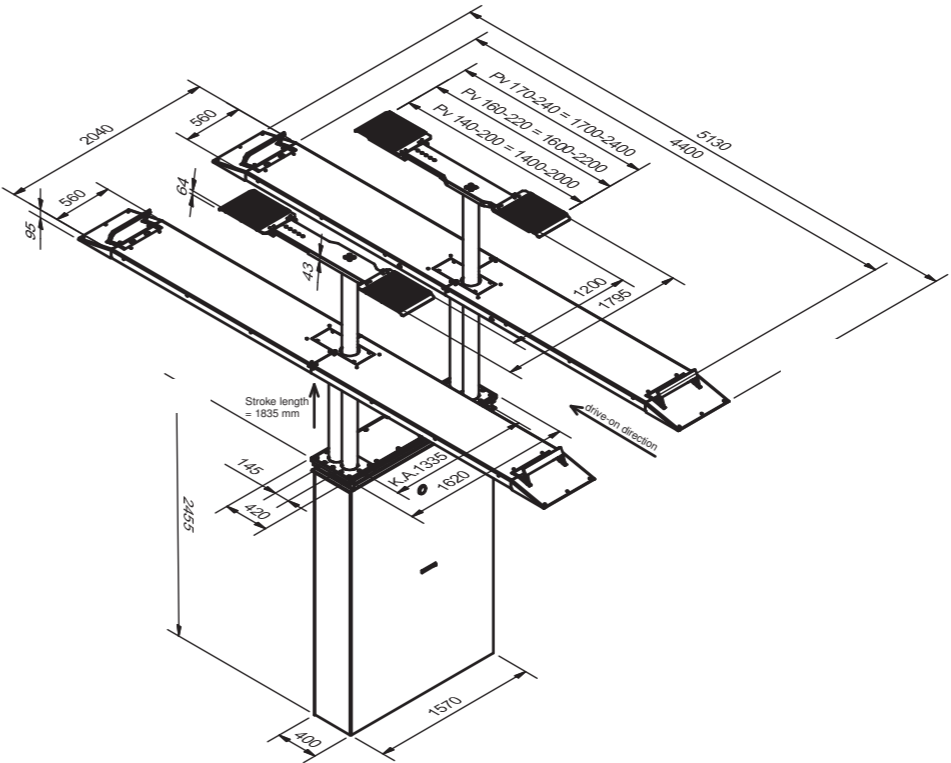
Installation:

- ☐ Superstructure on floor
- ☐ Superstructure in floor
- ☐ Ceiling installation

Optional extras:

- ☐ XY-pads
- ☐ Sets of rubber blocks, 40, 60, 80 and 100 mm

Zinc coating and special colours on request!



Low platform construction



Lift in reception area



Integrated stops

Masterlift 2.35 Fn 440 Check-in

Electro-hydraulic twin-ram lift, 3.5 t, with platforms and free-wheel lift



Click the QR-Code for detailed product information.

Further Information on www.autopstenhoj.com



Technical data	
Lifting capacity	3,500 kg
Lifting height	1,845 mm
Working height	1,948 mm
Cylinder diameter	2 x 123 mm
Distance between cylinders	1,335 mm
Lifting / lowering time	appr. 30 sec.
Foundation depth	2,615 mm
Pump unit	3 kW
Hydraulic oil	10 l
Voltage	230 / 400 V – 50 Hz – 16 A

Platforms	
Total length	5,190 mm
Usable legth of platform	4,400 mm
Wheel base	2,400 - 3,300 mm
Platform width	550 mm
Distance between platforms	1,010 mm
Drive-on height	103/148 mm
Free-wheel lift	
Length	1,400 - 2,000 mm
Stroke length	370 mm
Lifting/lowering time	appr. 8 sec.
Min. height	30 mm
Working height	2,363 mm

Application

- ☐ Check-in
- ☐ Repair & maintenance
- ☐ Testing

Description:

Steel cassette:

- ☐ Waterproof steel cassette

Hydraulic unit:

- ☐ Hard-chrome plated cylinder
- ☐ Flexible synchronization and safety system
- ☐ Corrosion-free guiding elements
- ☐ Pump unit with immersed motor
- ☐ Hydraulic oil
- ☐ Pneumatic emergency lowering
- ☐ Programmable pushbutton control unit

Superstructure:

- ☐ Platform (on-floor)
- ☐ A set of platforms with drive-on ramps and stops
- ☐ Lighting set incl.

Free-wheel lift Fn:

- ☐ Free-wheel lift, lengthwise adjustable
- ☐ Rubber-coated, non-skid pads
- ☐ Low minimum height

Standard colours:

- ☐ Platforms: RAL 7016 - grey and aluminium coated
- ☐ Free-wheel lift: RAL 7016 - grey

Versions:

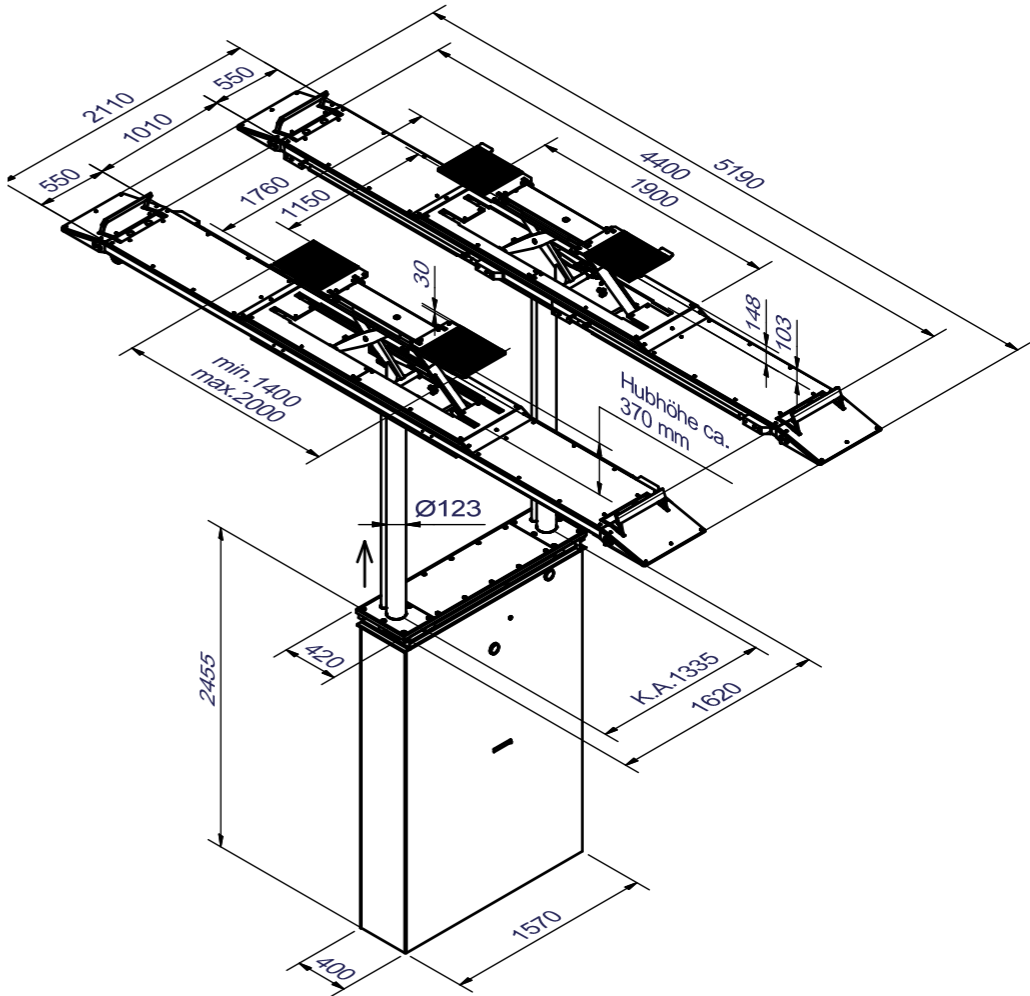
Steel cassette:

- ☐ Zinc-coated
- ☐ Coated

Installation:

- ☐ Superstructure on floor

Zinc coating and special colours on request!



Masterlift 2.35 Fv Uni

Electro-hydraulic twin-ram lift, 3.5 t capacity, superstructure with lifting blades



Click the QR-Code
for detailed product information.
Further Information on
www.autopstenhoj.com



Technical data	
Lifting capacity	3,500 kg
Lifting height	1,950 mm
Working height	1,972 mm
Cylinder diameter	2 x 123 mm
Lifting / lowering time (high pressure)	approx. 30 sec.
Foundation depth	2,625 mm
Motor	3 kW
Hydraulic oil	10 l
Voltage	230/400 V – 50 Hz –16 A

Fv Uni Superstructure	
Total length	4,658 mm
Wheel base, min. - max.	1,600 – 3,900 mm
Total width	KA 1335 mm: 765 / 1.045 / 2.101 mm KA 2.285 mm: 1.089 / 2.146 / 2.425 mm
Min. height	22/ 80 mm

Application

- ☐ Check-in
- ☐ Wash
- ☐ Repairs and maintenance

Description:

Steel cassette:
☐ Waterproof steel cassette

Hydraulic unit:
☐ Hard-chrome plated cylinder
☐ Flexible synchronization and safety system
☐ Corrosion-free guiding element
☐ Pump unit with immersed motor
☐ Hydraulic oil
☐ Pneumatic emergency lowering
☐ Programmable pushbutton control unit

Superstructure:
☐ Superstructure with lifting blades on floor
☐ Adaptation to various wheel bases by re-positioning of lifting blades
☐ Low minimum height

Standard surface-treatment:
☐ Hot galvanized

Versions:

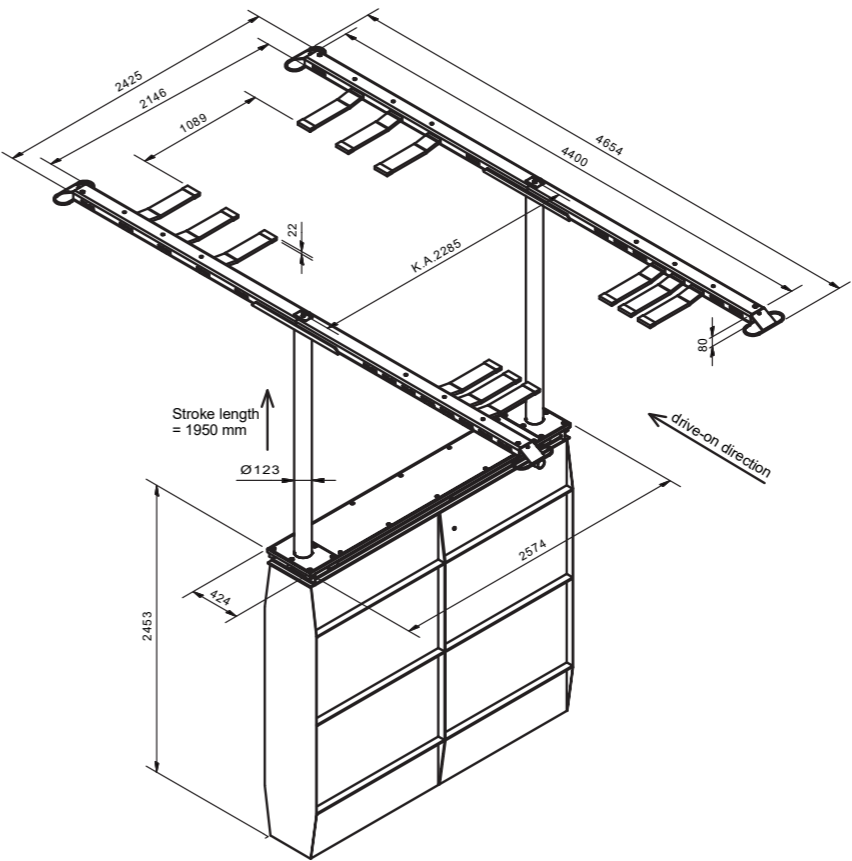
Hydraulic unit:
☐ KA1335 (135) and KA2285 (230) possible

Steel cassette:
☐ Hot galvanized
☐ Coated
☐ Self-carrying

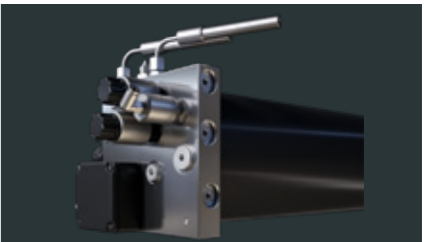
Installation:
☐ Superstructure on floor
☐ Ceiling installation

Optional extras:

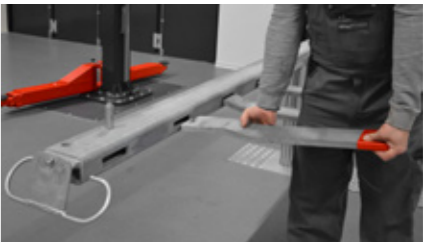
☐ Extra lifting blades



Hard-chrome plated cylinder



Pump unit with immersed motor



Fitting of lifting blades

Profilift 2.40 F460/Fn460

Electro-hydraulic twin-ram lift, 4 t capacity, platforms



Click the QR-Code
for detailed product information.

Further Information on
www.autopstenhoj.com



Application

- ☐ Check-in
- ☐ Repairs and maintenance
- ☐ Wheel alignment
- ☐ Testing

Approvals / recommendations

- ☐ Renault
- ☐ PL 2.40 F 460:
Jaguar,
Landrover,
Volkswagen Group
- ☐ PL 2.40 Fn 460: Opel

Description:

Steel cassette:

- ☐ Waterproof steel cassette

Hydraulic unit:

- ☐ Hard-chrome plated cylinder
- ☐ Flexible synchronization and safety system
- ☐ Corrosion-free guiding elements
- ☐ Pump unit with immersed motor
- ☐ Hydraulic oil
- ☐ Pneumatic emergency lowering
- ☐ Programmable pushbutton control unit

Superstructure:

- ☐ A set of platforms with drive-on ramps and stops
- ☐ High-quality anti-slip coating in RAL 7016 - grey

Free-wheel lift Fn:

- ☐ Free-wheel lift with adjustability lengthwise
- ☐ Rubber-coated, non-skid pads
- ☐ Low minimum height

Standard colours:

- ☐ Platforms: RAL 9006 - white
- ☐ Free-wheel lift: RAL 9006 - white aluminium
- ☐ Ramps: Red 3020 - red

Versions:

Steel cassette:

- ☐ Zinc-coated
- ☐ Coated
- ☐ Self-carrying

Installation:

- ☐ Superstructure on floor
- ☐ Superstructure in floor with or without flush floor device
- ☐ Ceiling installation

Optional extras:

Superstructure Platform:

- ☐ Supporting legs for wheel alignment
- ☐ Aluminium coating
- ☐ Scissor jack
- ☐ Play detector
- ☐ Lighting set

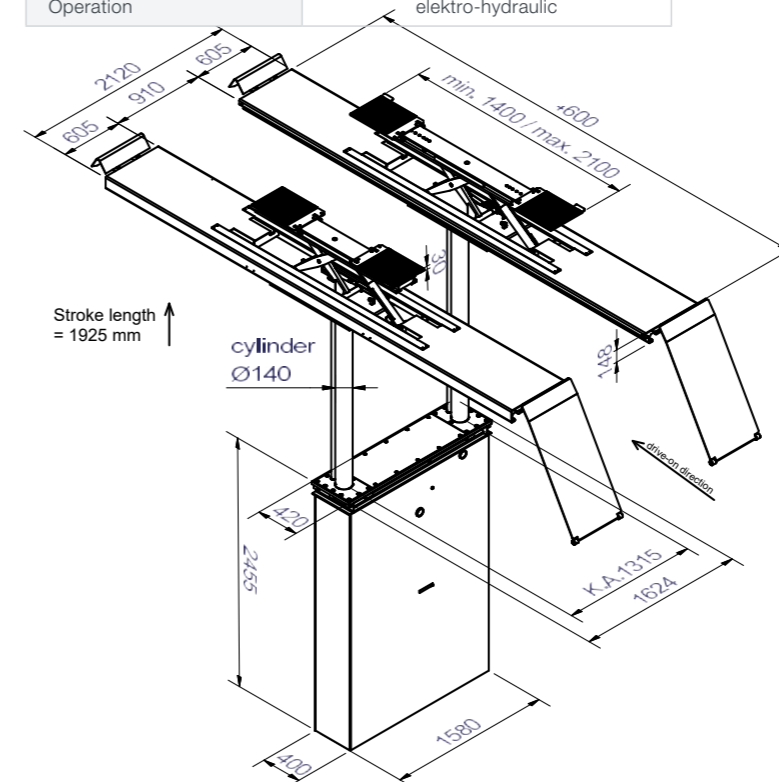
Superstructure Fn:

- ☐ XY-pads

**Zinc coating and special
colours on request!**

Technical data	
Lifting capacity	4,000 kg
Lifting height	1,925 mm
Working height	2,075 mm
Cylinder diameter	2 x 140 mm
Distance between cylinders	1,315 mm
Lifting / lowering time (high pressure)	approx. 30 sec.
Foundation depth	2,625 mm
Pump unit	3 kW
Hydraulic oil	approx. 10 l
Voltage	230 / 400 V – 50 Hz – 16 A

Free-wheel lift (Fn 460)	
Lifting capacity	3,500 Kg
Length	1,400 – 2,100 mm
Lifting height	370 mm + Rubber pads
Min. height	30 mm
Lifting / lowering time (high pressure)	approx. 8 sec.
Operation	elektro-hydraulic



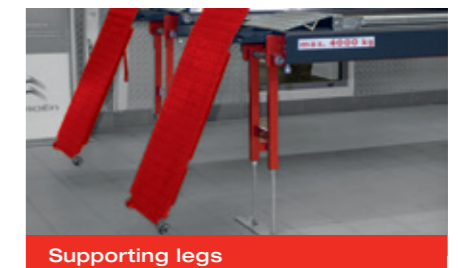
Platforms	
Total length	approx. 5,725 mm
Usable length of platform	4,600 mm
Wheel base	approx. 4,100 mm
Platform width	605 mm
Distance between platforms	910 mm
Drive-on height	150 mm

Scissor jack (Option)

Lifting capacity	2,000 Kg
Lifting height	250 mm
Operation	air-hydraulic
Lift positions	middle / 790 – 1,610 mm

GST play detector (optional extra)

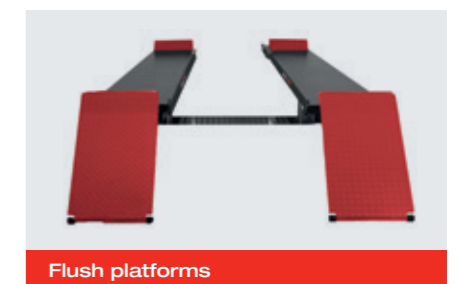
Max. axle load	2,500 Kg
Operation	hydraulic



Supporting legs



Integrated free-wheel lift



Flush platforms

Biglift 2.55 Saa

Electro-hydraulic twin-ram lift, 5.5 t capacity, superstructure with arms



Click the QR-Code for detailed product information.

Further Information on www.autopstenhoj.com



Technical data	
Lifting capacity	5,500 kg
Lifting height	1,860 mm
Working height	1,995 - 2,055 mm
Cylinder diameter	2 x 213 mm
Distance between cylinders	Saa 230: 2,150 mm Saa 265: 2,650 mm
Lifting / lowering time (high pressure)	approx. 45 sec.
Foundation depth	2,625 mm
Pump unit	3 kW
Hydraulic oil	17 l
Voltage	230 / 400 V – 50 Hz – 16 A

Arm superstructure	
Total width	3,500 mm
Lifting pad included in the delivery	11028 (135 – 195 mm)
Min. height	135 – 195 mm
Drive-through width	Saa 230: 1,930 mm Saa 265: 2,430 mm
Arm length, min. - max.	835 – 1,725 mm

Application

- Repairs and maintenance
- Body work

Approvals / recommendations

- Saa 230 & Saa 265: Volkswagen Group

Description:

- Steel cassette:**
- Waterproof steel cassette

- Hydraulic unit:**
- Hard-chrome plated cylinder
 - Flexible synchronization and safety system
 - Corrosion-free guiding elements
 - Pump unit with immersed motor
 - Hydraulic oil
 - Pneumatic emergency lowering
 - Programmable pushbutton control unit
 - Great stability, even with uneven weight distribution; due to the cylinder diameter of 213 mm

Superstructure:

- Double telescopic arms
- Internal arm locking system
- Low minimum height

Saa 265:

- Mechanical ratchet system integrated in the hydraulic unit
- Necessary air pressure (clean, dry, lubricated): min. 6 bar / max. 10 bar

Standard colours:

- Base plate: RAL 7016 - grey
- Arms: RAL 3020 - red

Versions:

- Saa 230 & Saa 265

Steel cassette:

- Zinc-coated
- Coated
- Self-carrying (Saaa 230)

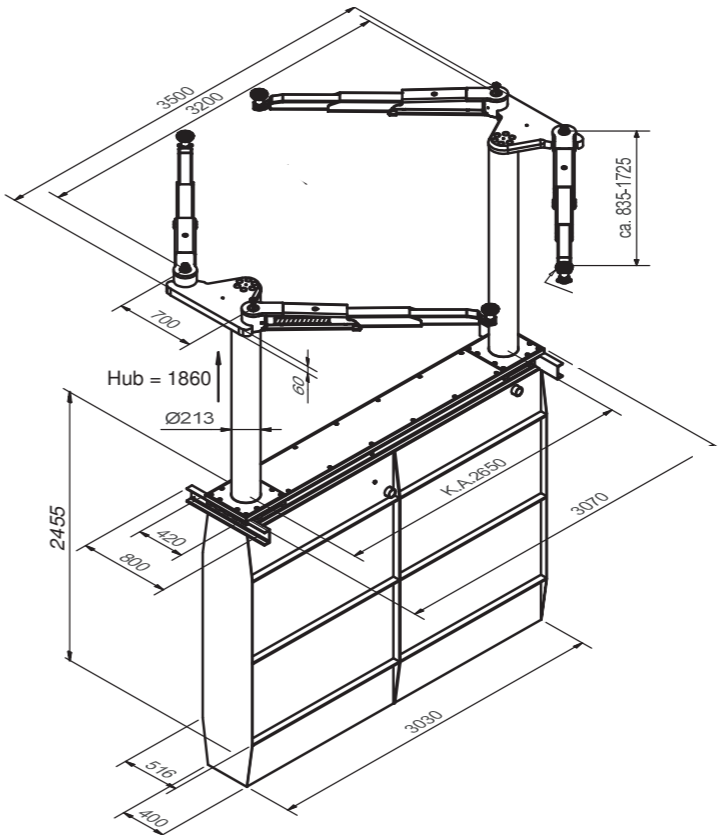
Installation:

- Superstructure on floor
- Superstructure in floor with covers
- Celing installation

Optional extras:

- Large program of extra pads

Zinc coating and special colours on request!



Superstructure on floor



Superstructure with lifting pads and wheel adaptors



Internal arm locking system

Biglift 2.55 Saav 145 Jumbo

Electro-hydraulic twin-ram lift, 5.5 t capacity, superstructure with arms



Click the QR-Code for detailed product information.

Further Information on www.autopstenhoj.com



Technical data	
Lifting capacity	5,500 kg
Lifting height	1,865 mm
Working height	2,000 – 2,060 mm
Cylinder diameter	2 x 213 mm
Distance between cylinders	1,350 mm
Lifting / lowering time (high pressure)	approx. 45 sec.
Foundation depth	2,625 mm
Pump unit	3 kW
Hydraulic oil	17 l
Voltage	230 / 400 V – 50 Hz – 16 A

Arm superstructure	
Total width	3,130 mm
Lifting pad included in the delivery	11028 (135 – 195 mm)
Min. height	135 – 195 mm
Arm length, min. - max.	715 – 1,410 mm

Application

- Repairs and maintenance

Approvals / recommendations

- Jaguar
- Opel
- Volkswagen Group

Description:

Steel cassette:

- Waterproof steel cassette

Hydraulic unit:

- Hard-chrome plated cylinder
- Flexible synchronization and safety system
- Corrosion-free guiding elements
- Pump unit with immersed motor
- Hydraulic oil
- Pneumatic emergency lowering
- Programmable pushbutton control unit
- Great stability, even with uneven weight distribution; due to the cylinder diameter of 213 mm

Superstructure:

- Double telescopic arms, crosswise adjustable
- Internal arm locking system
- Low minimum height

Standard colours

- Base plate: RAL 7016 - grey
- Arms: RAL 3020 - red

Versions:

Steel cassette:

- Zinc-coated
- Coated
- Self-carrying

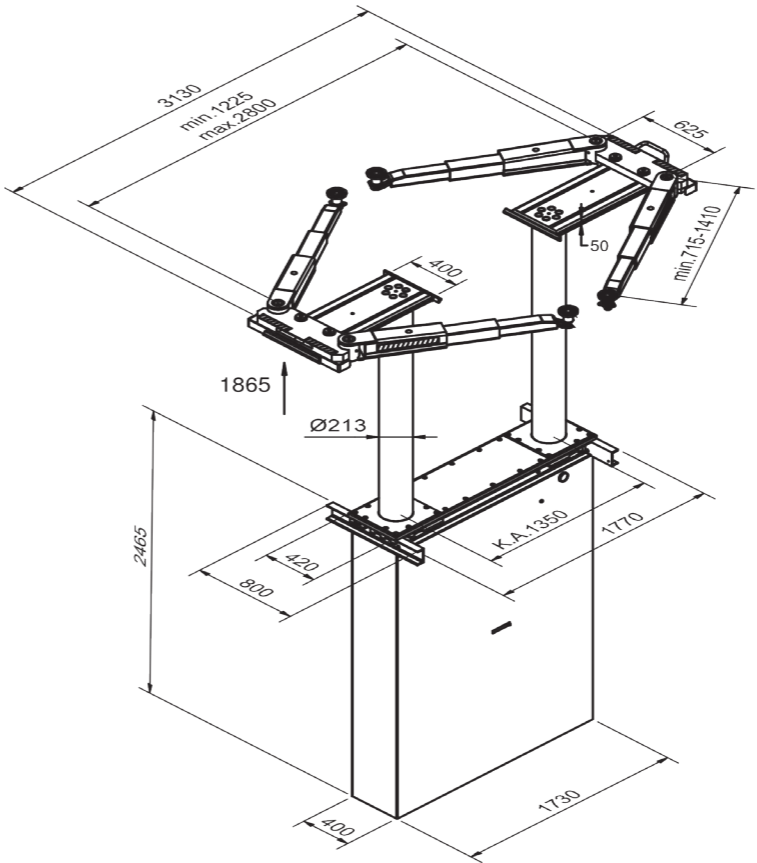
Installation:

- Superstructure on floor
- Ceiling installation

Optional extras:

- Large program of extra pads

Zinc coating and special colours on request!



Slidable superstructure



Internal arm locking system



Corrosion-free guiding elements

Biglift 2.65 Saaa

Electro-hydraulic twin-ram lift, 6.5 t capacity, superstructure with arms



Click the QR-Code for detailed product information.

Further Information on www.autopstenhoj.com



Technical data	
Lifting capacity	6,500 kg
Lifting height	1,865 mm
Working height	2,000 - 2,060 mm
Cylinder diameter	2 x 213 mm
Distance between cylinders	Saaa 145: 1,350 mm Saaa 230: 2,150 mm Saaa 265: 2,650 mm
Lifting / lowering time (high pressure)	approx. 45 sec.
Foundation depth	2,625 mm
Pump unit	3 kW
Hydraulic oil	18 l
Voltage	230 / 400 V – 50 Hz – 16 A

Arm superstructure	
Total width	3,350 mm
Lifting pad included in the delivery	11028 (135 – 195 mm)
Min. height	135 – 195 mm
Drive-through width	Saaa 230: 1,930 mm Saaa 265: 2,430 mm
Arm length, min. - max.	770 – 1,640 mm

Application

- Repairs and maintenance
- Body work

Approvals / recommendations

- Saaa 145: Volkswagen Group
- Saaa 230: Renault, Volkswagen Group
- Saaa 265: Mercedes-Benz, Volkswagen Group

Description:

Steel cassette:

- Waterproof steel cassette

Hydraulic unit:

- Hard-chrome plated cylinder
- Flexible synchronization and safety system
- Corrosion-free guiding elements
- Pump unit with immersed motor
- Hydraulic oil
- Pneumatic emergency lowering
- Programmable pushbutton control unit
- Great stability, even with uneven weight distribution; due to the cylinder diameter of 213 mm

Superstructure:

- Triple telescopic arms
- Wheel bearing of the first extension arm
- Low minimum height

Saaa 265:

- Mechanical ratchet system integrated in the hydraulic unit
- Air preparation unit for oiled and regulated compressed air (min . 6 bar / max . 10 bar)

Standard colours

- Base plates: RAL 7016 - grey
- Arms: RAL 3020 - red

Versions:

- Saaa 145, Saaa 230, Saaa 265

Steel cassette:

- Zinc-coated
- Coated
- Self-carrying (Saaa 230)

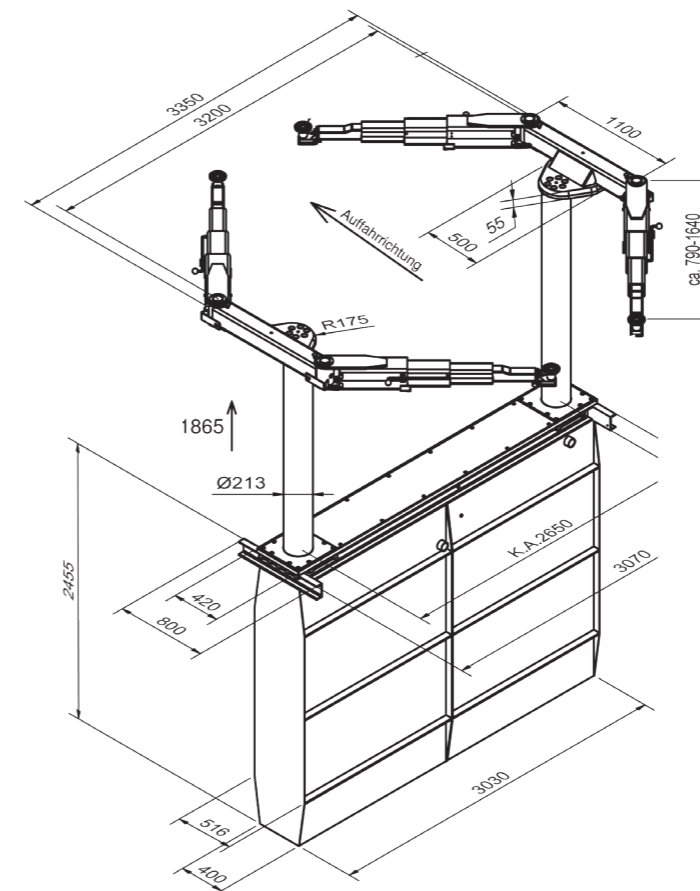
Installation:

- Superstructure on floor
- Superstructure in floor with covers
- Ceiling installation

Optional extras:

- Large program of extra pads

Zinc coating and special colours on request!



Triple telescopic arms with roller bearings



Various optional extras



Arm locking system

Biglift 2.65 F 550

Electro-hydraulic twin-ram lift, 6.5 t capacity, platforms



Click the QR-Code
for detailed product information.

Further Information on
www.autopstenhoj.com



Technical data	
Lifting capacity	6,500 kg
Lifting height	1,860 mm
Working height	2,040 mm
Cylinder diameter	2 x 213 mm
Distance between cylinders	1,550 mm
Lifting / lowering time (high pressure)	approx. 45 sec.
Foundation depth	2,625 mm
Pump unit	3 kW
Hydraulic oil	17 l
Voltage	230 / 400 V – 50 Hz – 16 A

Platforms	
Total length	approx. 6,800 mm
Usable length of platform	5,500 mm
Wheel base	approx. 5,000 mm
Platform width	650 mm
Distance between platforms	900 mm
Drive-on height	180 mm

Scissor jack (Option)	
Lifting capacity	2,600 Kg
Lifting height	250 mm
Operation	air-hydraulic
Lift positions	middle / 790 – 1,460 mm

Application

- ☐ Check-in
- ☐ Repairs and maintenance
- ☐ Testing

Approvals / recommendations

- ☐ Renault
- ☐ Volkswagen Group

Description:

Steel cassette:

- ❑ Waterproof steel cassette

Hydraulic unit:

- ☐ Hard-chrome plated cylinder
- ☐ Flexible synchronization and safety system
- ☐ Corrosion-free guiding elements
- ☐ Pump unit with immersed motor
- ☐ Hydraulic oil
- ☐ Pneumatic emergency lowering
- ☐ Programmable pushbutton control unit
- ☐ Great stability, even with uneven weight distribution; due to the cylinder diameter of 213 mm

Superstructure:

- A set of platforms with drive-on ramps and stops

Standard colours

- ☐ Platforms: RAL 7016 - grey
- ☐ Ramps: RAL 3020 - red

Versions:

Steel cassette:

- ☐ Zinc-coated
- ☐ Coated

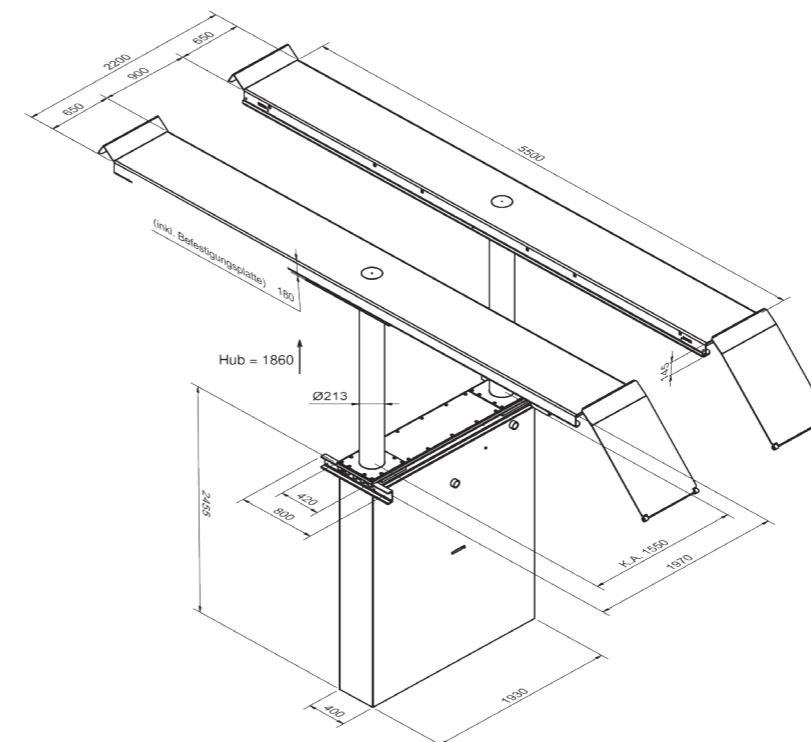
Installation:

- ☐ Superstructure on floor
- ☐ Superstructure in floor

Optional extras:

- ☐ LED-lighting set
- ☐ Scissor jack

Zinc coating and special colours on request!



Scissor jack



Non-skid surface



LED lighting set

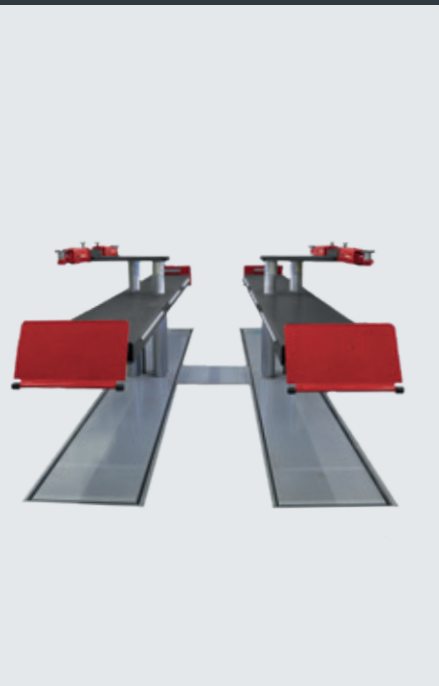
Biglift 4.55 Combi

Electro-hydraulic 2x twin-ram lift, 5.5 t capacity, platforms and free-wheel lift with arms



Click the QR-Code for detailed product information.

Further Information on www.autopstenhoj.com



Technical data	
Lifting capacity	5,500 kg
Lifting height	1,895 mm
Working height	F: 2,060 mm RFH 2,195 - 2,255 mm
Cylinder diameter	8 x 140 mm
Distance between cylinders	1,240 – 1,850 mm
Lifting / lowering time (high pressure)	approx. 38 sec.
Foundation depth	2,625 mm
Pump unit	3 kW
Hydraulic oil	20 l
Voltage	230/400 V – 50 Hz – 16 A

Arm superstructure	
Total width	3,134 mm
Lifting pad included in the delivery	11028 (135 – 195 mm)
Min. height	135 – 195 mm
Arm length, min. - max.	715 – 1,410 mm

Platforms	
Total length	approx. 6,800 mm
Usable legth of platform	5,500 mm
Wheel base	approx. 5,000 mm
Platform width	650 mm
Distance between platforms	900 mm
Drive-on height	165 mm

Application

- ☐ Check-in
- ☐ Repairs and maintenance
- ☐ Testing

Approvals / recommendations

- ☐ Volkswagen Group

Description:

Steel cassette:

- ☐ Waterproof steel cassette

Hydraulic unit:

- ☐ Hard-chrome plated cylinder
- ☐ Flexible synchronization and safety system
- ☐ Corrosion-free guiding elements
- ☐ Pump unit with immersed motor
- ☐ Hydraulic oil
- ☐ Pneumatic emergency lowering
- ☐ Programmable pushbutton control unit great stability, even with uneven weight distribution (all 4 cylinders in operation)

Superstructure:

- ☐ A set of platforms with drive-on ramps and stops

Free-wheel device Saav:

- ☐ Double telescopic arms, crosswise adjustable
- ☐ Internal arm locking system
- ☐ Low minimum height

Standard colours

- ☐ Platforms: RAL 7016 - grey
- ☐ Saav: Base plates RAL 7016 - grey, arms and sliders RAL 3020 - red
- ☐ Ramps: RAL 3020 - red

Versions:

Steel cassette:

- ☐ Zinc-coated
- ☐ Coated

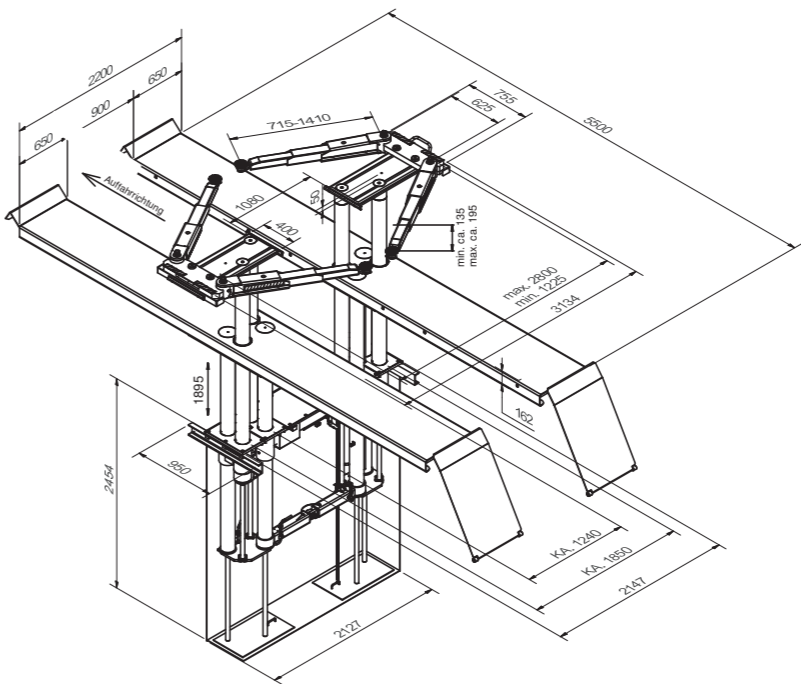
Installation:

- ☐ Superstructure on floor
- ☐ Superstructure in floor with or without flush floor device

Optional extras:

- ☐ LED-lighting set
- ☐ Large program of extra pads

Zinc coating and special colours on request!



Sturdy lift with Saav free-wheel lift



LED lighting set



Slidable superstructure

Sharklift 4.55

F 480/550 (KA 1550/3000)

Electro-hydraulic 4-ram lift, 5.5 t capacity, platforms



Click the QR-Code
for detailed product information.

Further Information on
www.autopstenhoj.com



Technical data	
Lifting capacity	5,500 kg
Lifting height	1,865 mm
Working height	2,060 mm
Cylinder diameter	4 x 140 mm
Distance between cylinders	1,550/3,000 mm
Lifting / lowering time (high pressure)	approx. 30 sec.
Foundation depth	2,625 mm
Pump unit	2 x 3 kW
Hydraulic oil	18 l
Voltage	230/400 V – 50 Hz – 16 A

Platforms	
Usable length of platform	F 480: 4,800 mm F 550: 5,500 mm
Wheel base	F 480: 4,150 mm F 550: 4,850 mm
Platform width	650 mm
Distance between platforms	900 mm
Drive-on height	195 mm

Scissor jack (Option)	
Lifting capacity	2,600 Kg
Lifting height	250 mm
Operation	air-hydraulic
Lift positions	middle / 790 – 1,460 mm

Application

- ☐ Check-in
- ☐ Repairs and maintenance
- ☐ Wheel alignment
- ☐ Testing

Approvals / recommendations

- ☐ SHL 4.55 F 550:
- Renault,
- Volkswagen Group

Description:

Steel cassette:

- ☐ Waterproof steel cassette

Hydraulic unit:

- ☐ 2 separate hydraulic units with hard-chrome plated cylinders
- ☐ Electronic synchronization between the hydraulic units and pre-programmed top stop
- ☐ Flexible synchronization and safety system
- ☐ Corrosion-free guiding elements
- ☐ Pump unit with immersed motor
- ☐ Hydraulic oil
- ☐ Pneumatic emergency lowering
- ☐ Programmable pushbutton control unit
- ☐ Air preparation unit for oil and regulated compressed air (min. 6 bar / max. 10 bar)

Superstructure:

- ☐ A set of platforms with drive-on ramps and stops
- Platforms with tolerances of only max $\pm 0,5$ mm length- and crosswise
- ☐ With two recesses front and rear, as well as distance pieces covering the entire length and fixated by steel edges in sides
- ☐ Preparation for innovative air supply for jacking beam

Standard colours

- ☐ Platforms: RAL 7016 - grey
- ☐ Ramps: RAL 3020 - red
- ☐ Functional surfaces zinc-coated as standard

Versions:

Steel cassette:

- ☐ Zinc-coated
- ☐ Coated

Installation:

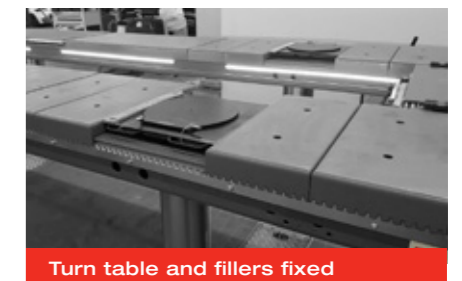
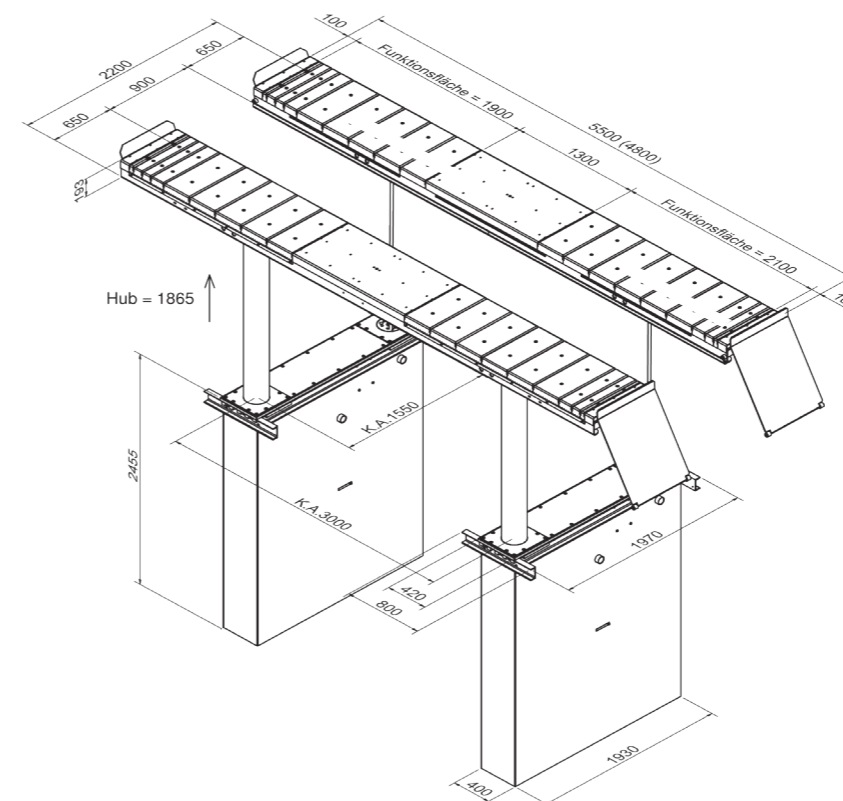
- ☐ Superstructure on floor
- ☐ Superstructure in floor with or without flush-floor device

Contact us with regard to the possibilities of combining with other wheel alignment equipment!

Optional extras:

- ☐ LED-lighting set
- ☐ Precision slip plates
- ☐ Scissor jack

Special colours available on request!



Turn table and fillers fixed



Air supply for scissor jack



Wheel alignment

Sharklift 4.65 F 480/550 (KA 1550/3000)

Electro-hydraulic 4-ram lift, 6.5 t capacity, platforms



Click the QR-Code
for detailed product information.

Further Information on
www.autopstenhoj.com



Technical data	
Lifting capacity	6,500 kg
Lifting height	1,865 mm
Working height	2,060 mm
Cylinder diameter	4 x 213 mm
Distance between cylinders	1,550 / 3,000 mm
Lifting / lowering time (high pressure)	approx. 35 sec.
Foundation depth	2,625 mm
Pump unit	2 x 3 kW
Hydraulic oil	18 l
Voltage	230 / 400 V – 50 Hz – 16 A

Fv Uni superstructure	
Usable length of platform	F 480: 4,800 mm F 550: 5,500 mm
Wheel base	F 480: 4,150 mm F 550: 4,850 mm
Platform width	650 mm
Distance between platforms	900 mm
Drive-on height	195 mm

Scissor jack (Option)	
Lifting capacity	2,600 Kg
Lifting height	250 mm
Operation	air-hydraulic
Lift positions	middle / 790 – 1,460 mm

Application

- ☐ Check-in
- ☐ Repairs and maintenance
- ☐ Wheel alignment
- ☐ Testing

Approvals / recommendations

- ☐ SHL 4.65 F 550:
Mercedes-Benz,
Volkswagen Group

Description:

Steel cassette:

- ☐ Waterproof steel cassette

Hydraulic unit:

- ☐ 2 separate hydraulic units with hard-chrome plated cylinders
- ☐ Electronic synchronization between the hydraulic units and pre-programmed top stop
- ☐ Flexible synchronization and safety system
- ☐ Corrosion-free guiding elements
- ☐ Pump unit with immersed motor
- ☐ Hydraulic oil
- ☐ Pneumatic emergency lowering
- ☐ Programmable pushbutton control unit
- ☐ Air preparation unit for oiled and regulated compressed air (min . 6 bar / max . 10 bar)

Superstructure:

- ☐ A set of platforms with drive-on ramps and stops
Platforms with tolerances of only max ± 0,5 mm length- and crosswise
- ☐ With two recesses front and rear, as well as distance pieces covering the entire length and fixated by steel edges in sides
- ☐ Preparation for innovative air supply for jacking beam

Standard colours

- ☐ Platforms: RAL 7016 - grey
- ☐ Ramp: RAL 3020 - red
- ☐ Functional surfaces zinc-coated as standard

Versions:

Steel cassette:

- ☐ Zinc-coated
- ☐ Coated

Installation:

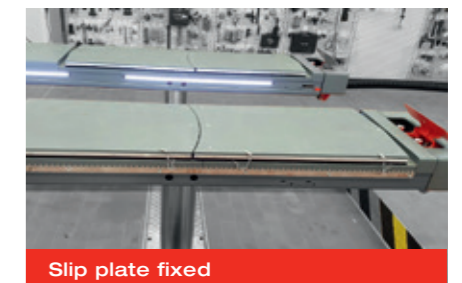
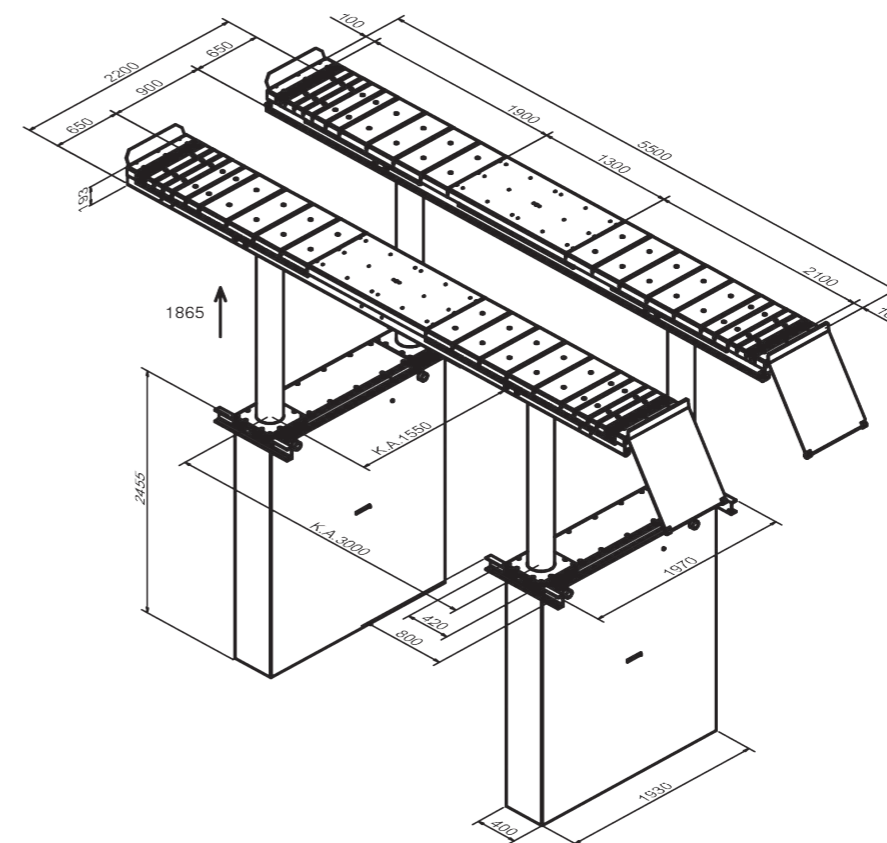
- ☐ Superstructure on floor
- ☐ Superstructure in floor with or without flush-floor device

Contact us with regard to
the possibilities of combining
with other wheel alignment
equipment!

Optional extras:

- ☐ LED-lighting set
- ☐ Precision slip plates
- ☐ Scissor jack

Special colours available
on request!



Slip plate fixed



Installation in
rectangular recess



Slip plate and MKS adaptor

Macro 100, 150 & 200

Air-hydraulic pit jack with 1 or 2 cylinders, 10, 15 & 20 t capacity



Click the QR-Code for detailed product information.

Further Information on www.autopstenhoj.com



Technical data	
Lifting capacity	10,000 / 15,000 / 20,000 kg
Stroke length	1 cylinder: 800 2 cylinder: 420 mm
Operation	air-hydraulic
Pressure min. - max.	8 – 12 bar

Application

- Repair and maintenance

Description:

- Transversely sliding cylinders
- Rapid and precise air-hydraulic unit with high speed approach control
- Control panel at ergonomical working height
- Deadman control
- Pressure relief valve

Standard colours:

- RAL 3020 - red
- RAL 7016 - grey

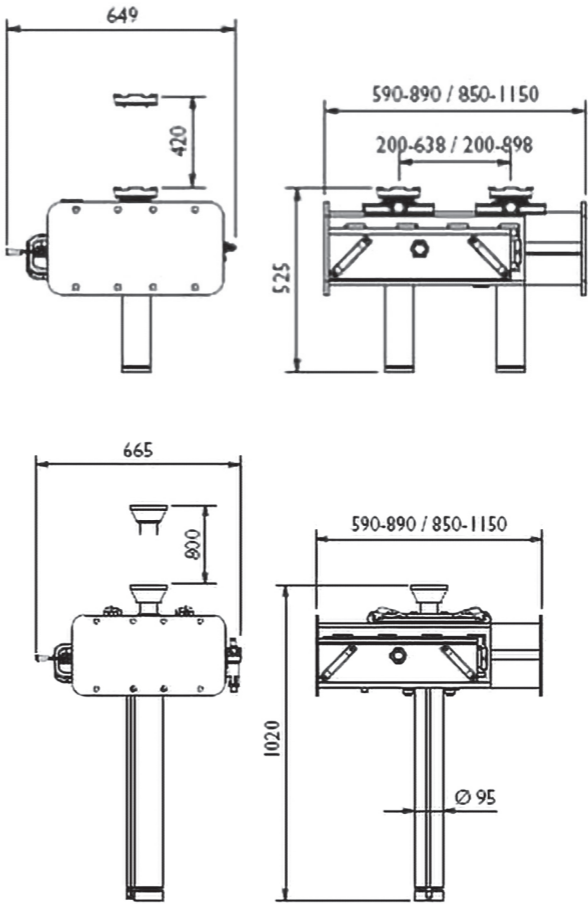
Versions:

- 1 or 2 cylinders with adjustable bridge: 590-890 mm or 850-1,150 mm
- 1-cylinders with 1 x 100 mm extension
- 2-cylinders with 2 x 100 mm extensions
- Manufactured according to customer's requirements

Optional extras:

- Auxiliary bridge
- 13, 15 & 20 t traverses
- 100 & 200 mm extensions

Special colours available on request!



Macro jacks are manufactured according to individual pit width



Wide traverse



Small traverse

Jet Cleaner RC 82/122

Parts cleaning machines



Click the QR-Code for detailed product information.

Further Information on www.autopstenhoj.com



Approvals / recommendations

□ Opel

Description:

Parts cleaning machines made of stainless steel for economical and ecological parts cleaning, degreasing on water basis using spray nozzels.

- Compact and sturdy design
- Made of stainless steel
- Simple handling
- Space saving
- 3D-blast pipe system incl. flat fan nozzles
- Low-water level alarm
- Safety limit switch on cover

Tub cover:

- Track rollers + fixed rollers

Versions:

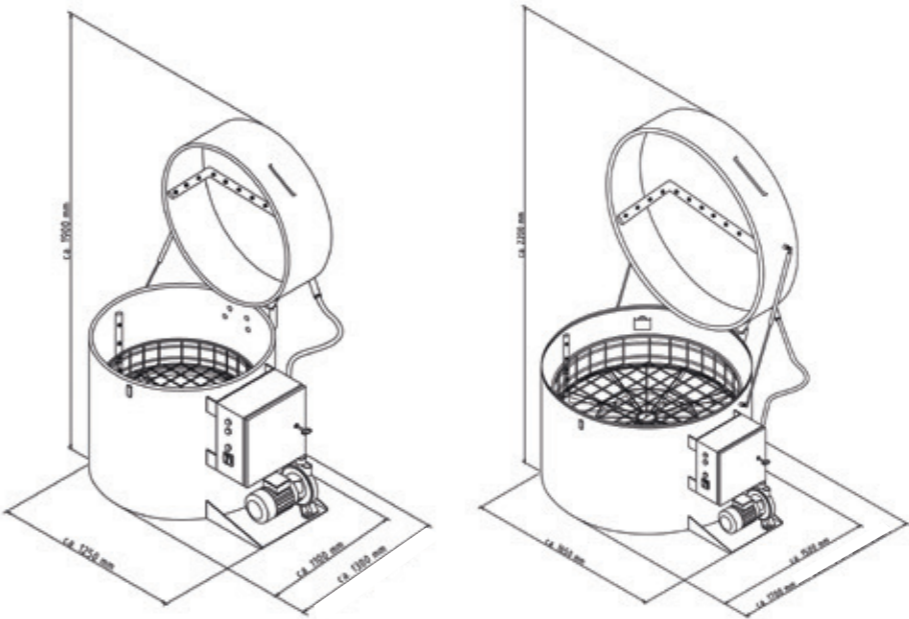
- RC 82 with 790 mm usable basket diameter
- RC 122 with 1190 mm usable basket diameter

Optional extras:

- Heating timer
- Oil skimmer
- Economy insulation
- Detergents & small parts baskets
- Service counter

Special colours available on request!

Technical Data		
	RC 82	RC 122
Usable basket diameter	790 mm	1.190 mm
Usable height	500 mm	500 mm
Loading height	930 mm	830 mm
Max. basket load	300 kg	500 kg
Liquid volume	150 l	370 l
Pump ratio	200 l/min	280 l/min
Pump pressure	3 bar	5 bar
Voltage	230 / 400 V - 50 Hz - 14 A	230 / 400 V - 50 Hz - 24 A
Pump motor rating	1.5 kW	4 kW
Heating	6 kW	9 + 6 kW
Basket drive	Jet of water	E-Motor 0.09 kW
Total height	approx. 1,200 mm	approx. 1,300 mm
Total width	approx. 1,300 mm	approx. 1,650 mm
Total depth	approx. 1,300 mm	approx. 1,500 mm
Total weight	approx. 220 kg	approx. 350 kg



Before cleaning



After cleaning

Wheel support devices

Standard version (400 mm) | Offroad version (500 mm)



Scan the QR-Code
for detailed product information.

Further Information on
www.autopstenhoj.com



E-vehicle: Complete underbody easily accessible



Hydrogen vehicle: Free access to the underbody



Transporter safely lifted at the wheels



Extremely flat sports cars smooth and safely grabbed

Application

- ☐ Body work
- ☐ Repair and maintenance

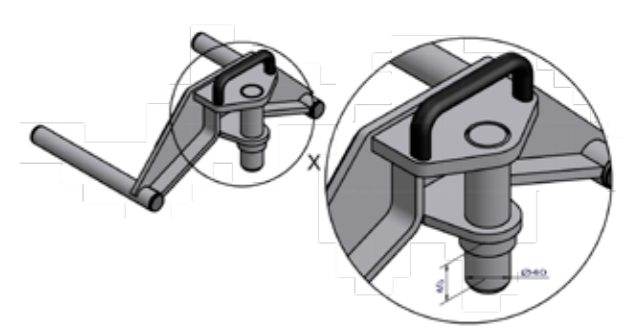
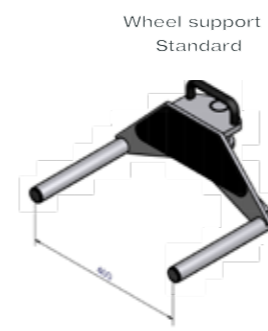
Description:

The wheel support devices are exclusively designed for use on AUTOPSTENHOJ inground swivel arm lifts as well as on the surface-mounted lifts „Maestro 2.35 NxT“ and „Maestro 2.50/2.55/2.65“ and they may only be used on these lifts.

- ☐ Free access to the vehicle's underbody,
- ☐ ideal also for electric vehicles (battery exchange).
Can be used independently of brand and model of vehicle.
- ☐ Wheels are not out of suspension.
- ☐ Ideal, if the working place cannot/should not be changed.
Minimum changeover time: Wheel support devices are plugged into the swivel arms instead of the available lifting pads.
- ☐ Quick and easy lifting due to the simple positioning of the wheel support devices.
- ☐ Rim mirror is protected by plastic protectors against scratch.

Versions:

- ☐ **Standard:**
Distance between arm grips: 400 mm
Wheel diameter: 500 - 580 mm
Rim size: 16 - 18 inch
- ☐ **Offroad:**
Distance between arms grips: 500 mm
Wheel diameter: 580 - 660 mm
Rim size: 19 - 21 inch
- ☐ Lifting capacity: 875 kg (per wheel support)

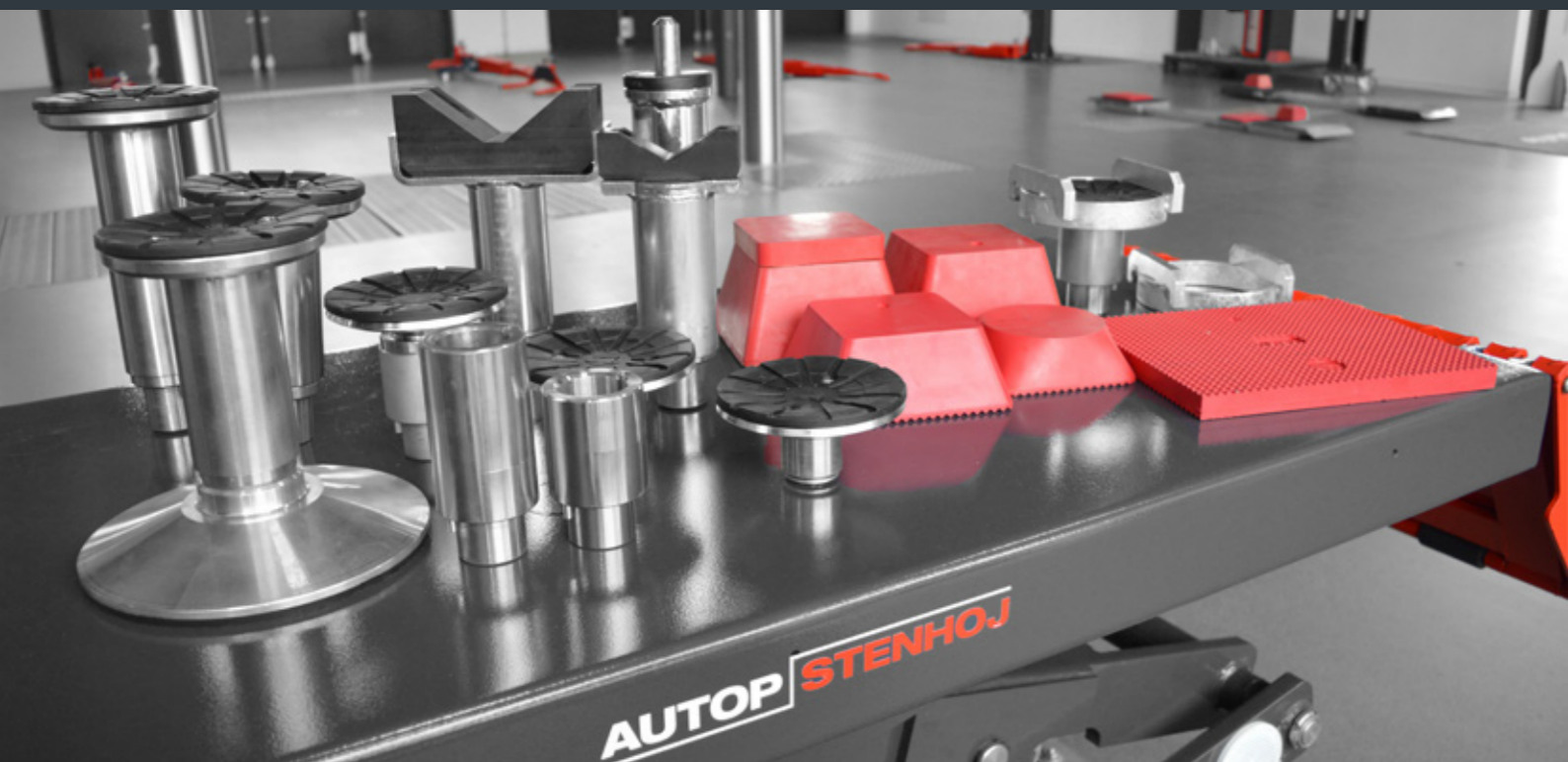


Flexible lifting with suitable accessories.



Scan the QR-Code for detailed product information.

Further Information on www.autopstenhoj.com



Pads: Compatibility to the point.

- F: flat and strong flex pad
- CF: flat and reliable lifting device for a simple quick and height-adjustable positioning
- CF-08: quick and precise positioning without necessity of re-adjustment of arm length
- A wide range of extra pads that enables lifting of vehicles with even very difficult lifting points
- Fixed as well as adjustable pads in many different heights

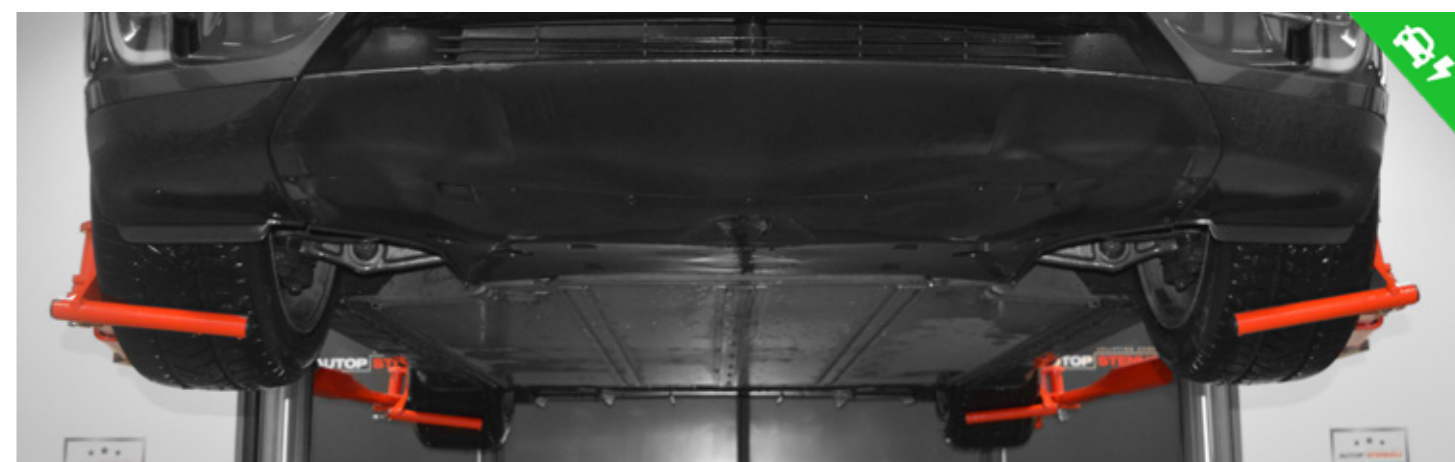
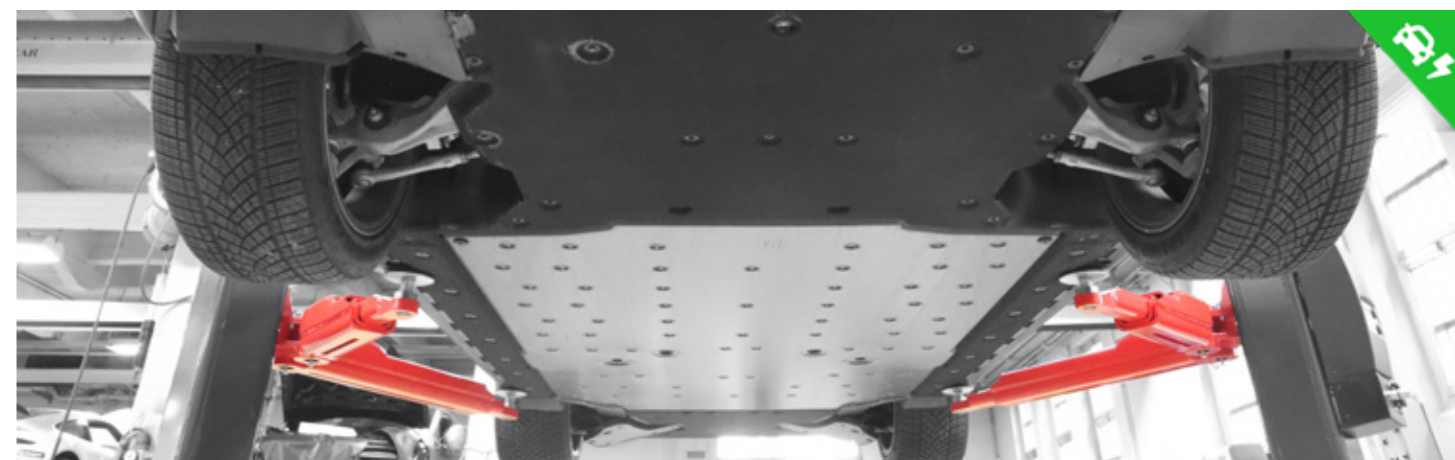
Rubber pads: convincing under any vehicle.

- Offer full protection of underbody when lifting at the recommended lifting points
- Various designs and sizes available

Wheel support devices: Free access to the underbody.

- Exclusively designed for use on AUTOPSTENHOJ inground swivel arm lifts as well as on the surface-mounted lifts „Maestro 2.35 NxT“ and „Maestro 2.50/2.55/2.65“ (only to be used on these lifts)
- be used on these lifts
- Wheel support devices standard & offroad (875 kg per wheel support device)
- Underbody remains freely accessible, ideal also for electric vehicles (battery removal)
- Quick and easy lifting due to the easy positioning of the wheel support devices

Special accessories on request!





AUTOPSTENHOJ GmbH

Sandkampstr. 90 | DE 48432 Rheine

☎ +49 5971 8602-02

✉ info@autopstenhoj.com

www.autopstenhoj.com

AUTOPSTENHOJ GmbH

Barrit Langgade 188-190 | DK 7150 Barrit

☎ +45 7682 1330

✉ info@autopstenhoj.com

www.autopstenhoj.com

